



Newly constructed cattle shed



Farm in CCTV



CGRC Jiri

Annual Report (NFY 2077/78)



Government of Nepal

Ministry of Agriculture and Livestock Development

Department of Livestock Services

National Livestock Resource Management and Promotion Office

Cattle Genetic Resource Center

Jiri, Dolakha

Contact: 049-400056/66

Website: www.cgrcjiri.gov.np

e-mail: info@cgrcjiri.gov.np



New Shed for Pig



Half constructed pig shed due to insufficient budge



Pigs relaxing in new comfortable shed



Partial fencing of land in Khimti

Annual Report

(NFY 2077/78)



Government of Nepal
Ministry of Agriculture and Livestock Development
Department of Livestock Services
National Livestock Resource Management and Promotion Office
Cattle Genetic Resource Center
Jiri, Dolakha
Contact: 049-400066/56
Website: www.cgrcjiri.gov.np
e-mail: info@cgrcjiri.gov.np, cgrcjiri@gmail.com

Preface

Livestock farming is an integral part of the Nepalese farming system which is supposed to be the backbone of the rural economy of the country. Resources for the superior genetic materials is utmost important to increase farm production and productivity in the country. To fulfill this requirement, the Cattle Genetic Resource Center, Jiri is playing a vital role to supply superior genetic materials of dairy cattle and pig in the country



It has supported farmers by providing cattle breeds of better genetic value, training programs related to cattle keeping along with different support activities both in cash and kind. As more than 70 % expenditure goes in feeding of livestock, the center has supported the farmers by providing appropriate grass seed suitable according to the geography and climate of the area. Besides providing cattle with high genetic values (heifer and breeding bull) and seeds of quality grasses, it has supported the farmers in swine keeping by providing better piglets of exotic breeds.

In order to give the basic information of the centers and its activities carried out during the fiscal Year 2077/78, this report has been prepared which might be useful for all those interested in this field. While preparing this report I am very much indebted to my seniors for their valuable suggestion and guidance. I am eagerly anticipating feedback of this report which might be greatly helpful to improve the report further in the future years.

I would like to express special thanks to Mr. Gana Bahadur Jirel (Livestock Development Officer), Dhana Maya Magar (Asst. Livestock Service Technician) and Mr. Bal Kumar Dahal (Asst. Livestock Service Technician) for their assistance in preparing this report. I am equally thankful to all the staffs and other employees who have been involved in care and management of cattle, pigs and other activities of the farm. At last not the least, I would like to express my gratitude to all those who have helped me to bring this report in this form.

A handwritten signature in black ink, appearing to read 'G. Giri', written over a light blue background.

Dr Gopal Giri
Senior Livestock Development Officer

Table of Contents

S.No	Title	Page No.
1.	Introduction	1
2	Historical Background	1
3.	Objectives and Terms of Reference (ToR)	3
	3.1 Objectives	3
	3.2 Terms of Reference (ToR)	4
4.	Organizational Chart	5
5	Major components	6
	5.1 Cattle Resource Unit (CRU)	6
	5.1.1 Stock details and mortality	6
	5.1.2 Milk production	7
	5.1.3 Trend of average milking cow no and their productivity in 6 years	8
	5.1.4 Comparison of Age at first calving and calving Interval	9
	5.1.5 Milk quality analysis at the center	9
	5.1.6 Ranking of cow	9
	5.1.7 Cattle outreach program	9
	5.2 Pig Production Unit	10
	5.2.1 Stock details of pig	11
	5.2.2 Production, distribution, and mortality of piglets	11
	5.2.3 Age at first farrowing	11
	5.2.4 Farrowing interval	11
	5.2.5 Pig outreach program	11
	5.3 Pasture and Range Land Management Unit (PARMU)	12
	5.3.1 Hydroponics forage production	13
6.	Major annual activities and progress in NFY 2077/78	13
7	List of Inventories	14
8	Price of products and goods	14
9	Achievements and Constraints Compared to NFY 2076/77	15
10	Revenue collection	15
11	Approved posts and their status	15
12	Problems	16
13	Attempts made to solve the problems	16

List of Tables

Table 1: Land area and its allocation for different use	17
Table 2: Meteorology of Jiri	17
Table 3: List of Farm Managers	17
Table 4: Stock details of cattle at the end of NFY 2077/78	18
Table 5: Breed wise list of cattle more than a year old	19
Table 6: Month-wise number of dead cattle in NFY 2077/78	21
Table 7: Year-wise trend of calves born and their mortality	22
Table 8: Month wise AI services carried out in center	22
Table 9: Year wise AI Services and distribution of bull	23
Table 10: Milk production	23
Table 11: Age at first calving	23
Table 12: Calving intervals	24
Table 13: Milk quality analysis	26
Table 14: Ranking of cow on the basis of milk production	26
Table 15: Stock of pig at the end of NFY 2077/78	29
Table 16: Production and mortality of piglets	29
Table 17: Production and distribution of piglets	29
Table 18: Age at first farrowing	30
Table 19: Farrowing interval	30
Table 20: Details of forage seed production and distribution	31
Table 21: Activities (Target Vs achievement) NFY 2077/78	31
Table 22: Progress achieved in NFY 2077/78	34
Table 23: Major tools, equipment and their status	34
Table 24: Price list of the products and goods in the center	36
Table 25: Share of revenue collection	36
Table 26: Details of yearly revenue collection (NRs in Lakh)	36
Table 27: Approved posts and their status	37
Table 28: Description of employees	37
Table 29: Description of daily wage workers	38
Annexs	
Annex 1: Annual Program NFY 2077/78	40
Annex 2: Annual Program NFY 2077/78	44

Abbreviations

Act.	:	Acting
AD	:	Anno Domini
AI	:	Artificial Insemination
BS	:	<i>Bikram Sambat</i>
C	:	Centigrade
CGRC	:	Cattle Genetic Resource Center
CLDP	:	Co-ordinated Livestock Development Program
CRU	:	Cattle Resource Unit
D	:	Duroc
DLSO	:	District Livestock Service Office
E	:	East
Ha	:	Hectare
HF	:	Holstein Friesian
J	:	Jersey
JHF	:	Jersey and Holstein Friesian cross
JMDP	:	Jiri Multiple Development Project
Km	:	Kilometer
L	:	Landrace
LDF	:	Livestock Development Farm
LDO	:	Livestock Development Officer
masl	:	Meter above sea level
mm	:	Millimeter
Mt	:	Metric ton
Mt.	:	Mount
N	:	North
NARC	:	Nepal Agricultural Research Council
NFY	:	Nepalese Fiscal Year
No.	:	Number
NRs	:	Nepalese Rupees
PARMU	:	Pasture and Rangeland Management Unit
S.N.	:	Serial Number
SNF	:	Solid Not Fat
ToR	:	Terms of reference
VDC	:	Village Development Committee
Y	:	Yorkshire

1 Introduction

The Jiri valley, known as Nepal's Switzerland and the gateway to Mt Everest, a small town having approximately population of 16000, is surrounded by Maali (Batase), Buldada, Cherdung and Tame hills from east, west, north, and south respectively in Dolakha district of Bagmati province of central Nepal. It is almost in the center of the district and 188 Km far from Kathmandu and 55 Km from Charikot (district headquarter).

The Cattle Genetic Resource Centre (CGRC) previously known as Livestock Development Farm (LDF) is situated at the core of panoramic Jiri valley and surrounded by Ward numbers 4, 5 and 6 of Jiri municipality. It occupies approximately 209 Ha of land in two locations, i.e. 84 Ha in Jiri and 125 Ha in Khimti, Gokulganga village municipality of adjoining Ramechhap district (Table 1). The altitude of the center is 1935 masl and located between the latitude of 27°38' N and longitude of 84°14' E.

During summer the climate is mild warm and winter has chilling cold. The climate of Jiri is classified as cwb (Subtropical highland climate) according to Köppen–Geiger climate classification system. The average annual temperature is only 14.3°C ranging from highest maximum is in June month (22.9°C) and lowest minimum temperature is in January (0.5°C). The average rainfall is 2142 mm. The lowest rainfall occurs during December (4 mm) and highest in July (577 mm) month (Table 2).

2 Historical Background

Originally Jirels were the ethnic minorities (resemble to Sherpa community) in small valley of Jiri. They were descendants of Kirat clan. Jiri is also considered as the base of Mt. Everest. All early Everest expeditions including the one led by Tenzing Norgay and Edmund Hillary on the summit had got through Jiri. So Jiri is also called the "Gateway to Mt. Everest".

A Swiss Geologist Dr. Toni Hagen, who is also considered as the first known arrival of foreign national in Jiri, arrived here on foot via the Khadichaur in order to visit Mt Everest base camp. After arriving in Jiri, he stayed in a house of local peasant for few days. During that time, the livelihood of people in Jiri was very poor and they were living in an abject poverty. While staying in Jiri, Dr. Hagen was very much influenced by the warm hospitality provided by its local people despite their poverty stricken and difficult livelihood. While pronouncing he heard Jiri similar to that of his home town Zurich and he also found similarity of climate and geography of both Jiri and Zurich. So a sort of affection regarding the place and

people was created in his soul and was committed to do something to this place and people. He thought that by establishing a livestock farm, the traditional livestock farming practiced by local could be improved which ultimately would help to enhance the livelihood of local poor. As he was an influential person in his country, he persuaded government of Switzerland to establish a livestock farm in Jiri of Nepal. By the result of which, the Livestock Development Farm (LDF) Jiri was established in 1957 AD (NFY 2014/15) with the financial and technical assistance of Swiss government.

The name of LDF Jiri was renamed as Jiri Agriculture Station in the year 2018 BS by the inclusion of Agronomy, as well as Horticulture Sections. In order to extend the livestock development activities a Cattle Breeding Section at Khimti, Lahare VDC of Ramechhap district was established in NFY 2019/020. Later on, the Agriculture Station was handed to Nepal Government and the handover programs was inaugurated by then King late Mahendra Bir Bikram Shahdev in Magh 23, 2020 BS.

Before the establishment of the farm, the present area of the farm was being used as the government's pastureland and almost entire land area was swampy. While establishing farm, Swiss technical experts improved and converted the swampy land into cultivable land by construction and development of network of open and underground drainage system for the free flow of excess water. These drainage systems possibly the one and only sub-surface drainage system exists so far in the country. Jiri River flows through the center of farm and divides the area into 2 parts resulting eastern and western section. Almost all infrastructure lies in the eastern section and pasture land in western section.

In the year 2024 BS, a veterinary unit was established to provide animal health services to livestock which later on converted to Veterinary hospital in NFY 2026/27. Gradually Jiri Agriculture center broadened it disciplines of intervention in other areas such as health, education, forestry, local development and so on from the Jiri Agriculture station. For smooth coordination among different institutions, Jiri Agriculture station was replaced by a single umbrella i.e. Jiri Multipurpose Development Project (JMDP). This JMDP was guided by an apex body in the Kathmandu. The apex body constitutes representatives (member) from all concerned line ministries. Even after the formation of JMDP, the issue of coordination among different disciplines remained unsolved and all the institutions were made independent to work freely in NFY 2028/29. After this all independent units were responsible to work under the guidance of their respective ministries. After this decision, the chief of the Jiri Agriculture Station assigned to post of Chief Officer to work in the field of agriculture and livestock. During the NFY 2029/30

BS, the crop development component under the station was shifted to Kabre VDC of Dolakha and was established as an agricultural farm. Again, the Agriculture station launched Co-ordinated Livestock Development Program (CLDP) in NFY 2037/38 BS by involving adjoining Ramechhap district. The horticulture component of the station was shifted to another VDC, i.e. Boch in NFY 2042/43 BS. In the same way, the Veterinary Hospital of Dolakha district was shifted to Charikot and newly launched CLDP was transferred to Manthali (district headquarter) of Ramechhap district as a separate entity. After being all components independent in the NFY 2042/43 BS, Agriculture station now recognized as a Livestock Development Farm Jiri having its branch in Khimti of Ramechhap district. After this, Livestock Development Officer was assigned the chief of Livestock Development Farm Jiri.

In 2072 BS, almost all infrastructures (26 out of 29) i.e. office buildings, cattle shed, pig shed, hay store, staff quarters were completely destroyed by the deadliest earthquake and its aftershocks. Constructions of few buildings have completed and few dilapidated infrastructures are yet to be renovated. The cowmen and other staff are still residing in makeshift structures or temporary shelters.

1. Previously known as Livestock Development Farm Jiri was renamed as Cattle Genetic Resource Center (CGRC) Jiri under the National Livestock Resource Management and Promotion Office (NLRMPO) of Department of Livestock Services, Ministry of Agriculture and Livestock Development from Shrawan 1, 2075 BS and was assigned new terms of reference (ToR).

The names of chiefs of the farm who worked from 2020 BS to to-date is presented in Table 3.

3 Objectives and Terms of Reference (ToR)

The center is mandated to conserve, promote, utilize and improve the national genetic resources of the cattle. In addition, it has also mandate of adapting and transferring of improved breeding technologies to enhance the production and productivity of cattle. The major objectives of the center are as follows.

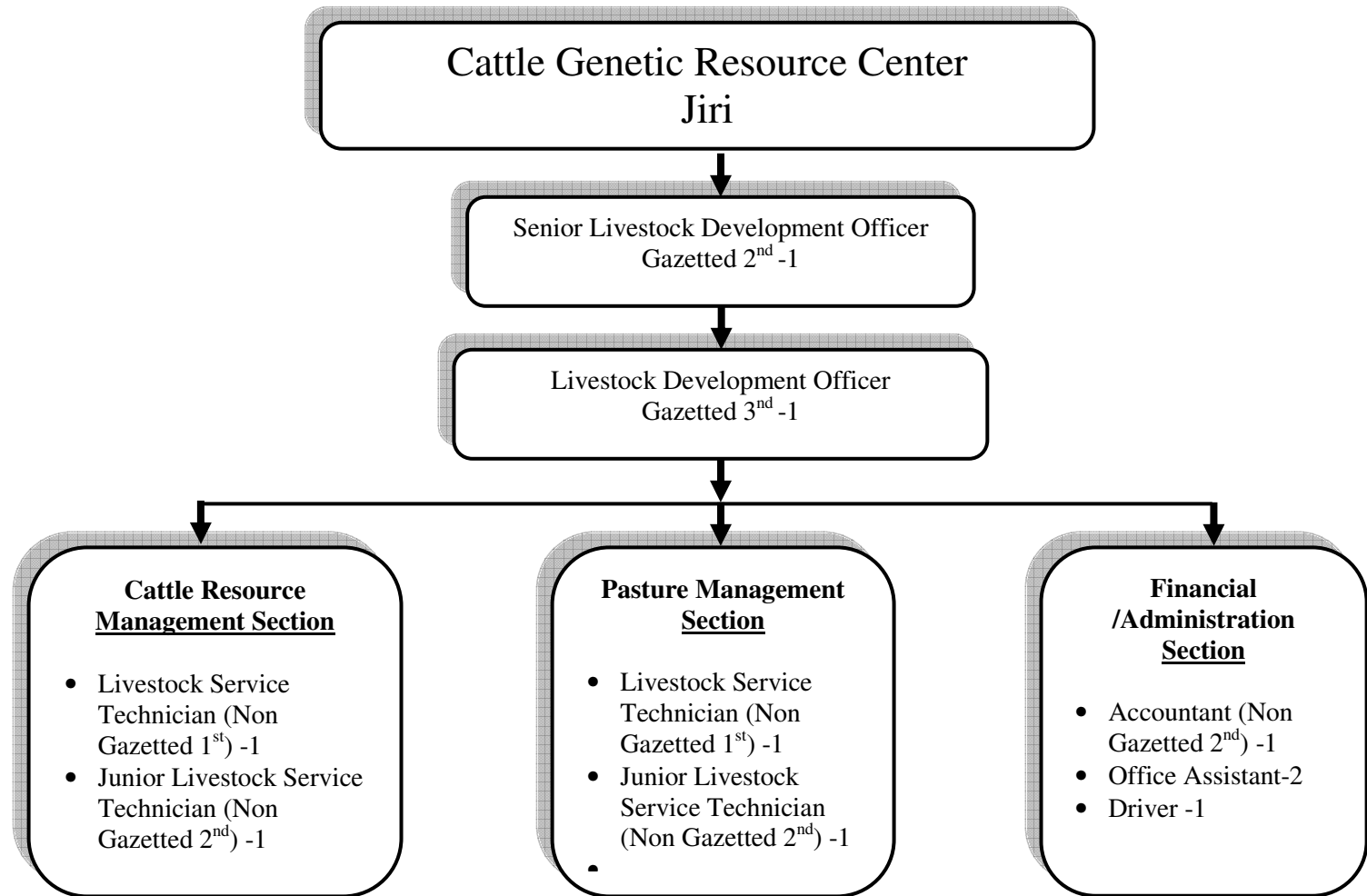
3.1 Objectives

- Develop, expand and manage the cattle nucleus herds at the national level.
- Develop, adapt and transfer the latest appropriate breeding technologies to improve the production and productivity of cattle at a national and international level.
- Adapt and transfer forage and pasture development programs and technologies suitable especially for alpine region.
- Conserve, promote and utilize the genetic resources of the cattle.

3.2 Terms of Reference (ToR)

- Establish and manage the nucleus and multiplier herds of cows focusing on national demand and farmers' choice
- Develop cattle Bull-Mother by choosing elite bull/mother.
- Maintain the purity of different breeds of cows.
- Develop and expand technologies that promote productivity of cattle.
- Improve breeds through the use of certified bulls, proven sire and produce high-quality cows and bulls through the use of embryo production and transfer technologies.
- Develop proven bulls by the use of latest breeding technologies including progeny testing.
- Conduct outreach resource development programs by adopting latest cattle development techniques.
- Support to manage genetic biodiversity of cattle population of local breeds at the national level by practicing both in-situ and ex-situ conservation.
- Collaborate with the Nepal Agricultural Research Council (NARC), Universities and national as well as international institutions, research stations for adopting and expanding the technology related to cattle development.
- Cooperate with the local and regional level in coordination with National Livestock Resource Management and Promotion Office on issues related to cattle development.
- Conduct programs/seminars for capacity development of dairy farmers related to different issue of cattle improvement.
- Evaluate the performance of cattle by analyzing Data recorded in the center.
- Follow and expand the latest animal feed technologies at the national level.
- Develop and expand varieties of alpine grasses.
- Manage herds of exotic breeds of pig.

4 Organizational Chart



5 Major components

There are three major components on which the center is working at present. These are Cattle Resource Unit, Pasture and Range Land Management Unit and Pig Resource Unit.

5.1 Cattle Resource Unit (CRU)

CGRC is one of the old and only one major research and production center for Jersey cattle in the country (Figure 1). During the early years of establishment, the farm was known as the resource center for Brown Swiss cattle. As demand for the Jersey cattle by dairy farmers increased, farm introduced Jersey cattle in NFY 2057/58 BS and all Brown Swiss cattle were completely replaced by Jersey and partially Holstein Frisian cattle. Now CGRC is primarily known as the resource center for Jersey cow. Cross bred breeding bulls, pure bulls, Jersey calves and heifers are distributed to the farmers of dairy pocket areas of

the different district. The bulls produced in the center are used for the genetic improvement of indigenous cattle by adopting natural breeding practice in those areas where Artificial Insemination service for cattle is not available. At present female calves in the center are being kept as replacement stock and male calves are being distributed to the farmers to use for natural breeding. Aged and unproductive cows are being auctioned annually. Quality male calves are being provided to National Livestock Breeding Office, Pokhara for semen collection.

The regular health inspection, drenching, vaccination programs is carried out in cows. In addition to this, serum and blood collection and its examinations is also carried out to prevent the cow from possible incidence of disease occurrence. Teats dipping of milking cows is also practiced regularly to prevent them from Mastitis. Special attention to pregnant as well cows in risk is provided to prevent them from possible hazards.

5.1.1 Stock details and mortality

During NFY 2077/78, on an average, about 125 cattle were reared at the center ranging from 116 to 137. 15 adult males were reared but the number of adult



Figure: 1 Grazing cows in the pasture

female ranged from 41 to 96. Similarly, the number of small male animals (male calves) ranged from 3 to 20 and that of small female animals (female calves) ranged from 6 to 54 (Table 4). During NFY 2077/78 altogether 48 calvings were recorded against 52 calvings during NFY 2076/77. No single animal was aborted during this Fiscal year, whereas the aborted number was 7 in last Fiscal year NFY 2076/77. Out of 48 calvings, 27 were male calves and 21 were female calves. Auction of animal couldn't carry out during NFY 2077/78.

The no of cattle more than a year old age when considered, there were 54 cattle of jersey (J) breed, 13 were of Holstein Freisian (HF) Breed and 21 were of cross of Jersey and Holstein Freisian (JHF). Breed wise list of cattle more than a year old is presented in Table 5.

During NFY 2077/78, 2 adult females, 10 male and 3 female calves died. The total no of died animal is 15 (Table 6). The mortality percentage was found to be 27.1 % (Table 7) (considering both sexes) which was lower than the mortality in last year, which was 37.7 %. Shrawan, Bhadra, Kartik and Chaitra month experienced highest mortality in calves.

The center has been providing AI service to the cows. During the last NFY 2077/78, about 166 inseminations were carried. Out of this number 55 inseminations were done in cows of center, and remaining 111 inseminations were carried out in famers' cow. 12 buffaloes were inseminated in buffalo in Jiri area. The center has kept cattle breeding bull both in Jiri and Khimti to provide natural services for animal owned by local farmers. Buffalo bull is being reared in Khimti according to demand of local farmers to provide natural breeding service. 27 buffaloes were provided natural breeding service from the buffalo bull reared in Khimti. The year wise AI service carried out by the center since NFY 2071/72 to NFY 2077/78 is presented in Table 8.

5.1.2 Milk production

Milk production in the center has been increasing year by year since last few years. During this NFY 2077/78 the total milk production reached 1,29,382 Kg which is 23.33 % more than previous year i.e NFY 2076/77 (Figure 2).

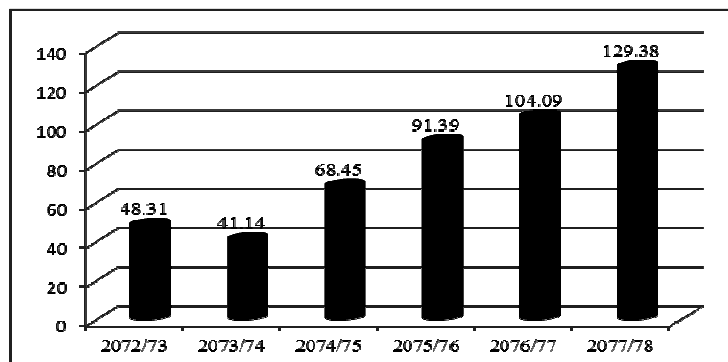


Figure 2: Year wise Milk Production (in 000 Kg)

Similarly, the average daily milk production reached 351 Kg whereas it was only 283.9 in the previous fiscal year (Table 9). When comparing the daily milk yield in the center of past 4 fiscal years, the yield was found lowest during the month of Magh, Falgun and Chaitra in all the fiscal year, there after the yield has increased up to Ashad and has decreased afterwards in all fiscal years (Figure 3). There were 40 milking cows during the NFY 2077/78 as compared to 39.67 in NFY 2076/77, the increase was insignificant (Table 9) than previous fiscal year. The drastic decrease in milk production after Chaitra month in NFY 2077/78 was due to interruption in feed supply from the supplier because of price hike in feed ingredients.

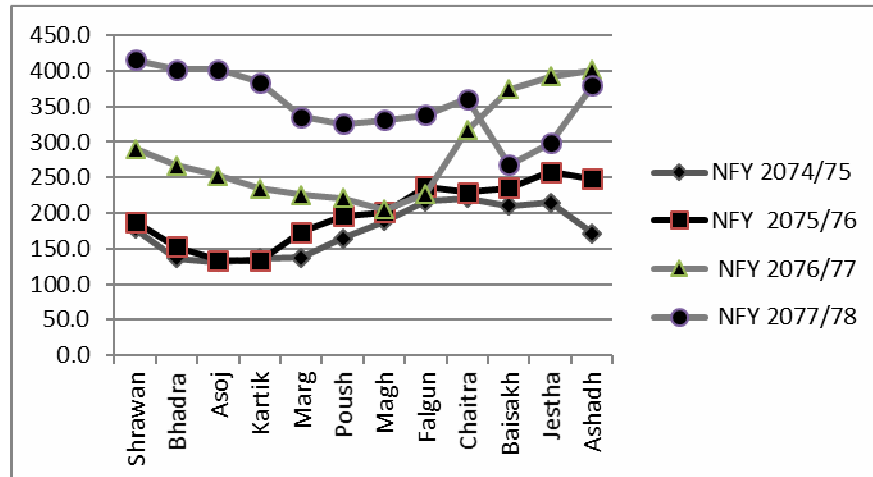


Figure 3, Comparison on Month-wise daily milk production during 4 NFYs

5.1.3 Trend of average Milking cow no and their Productivity in 6 years

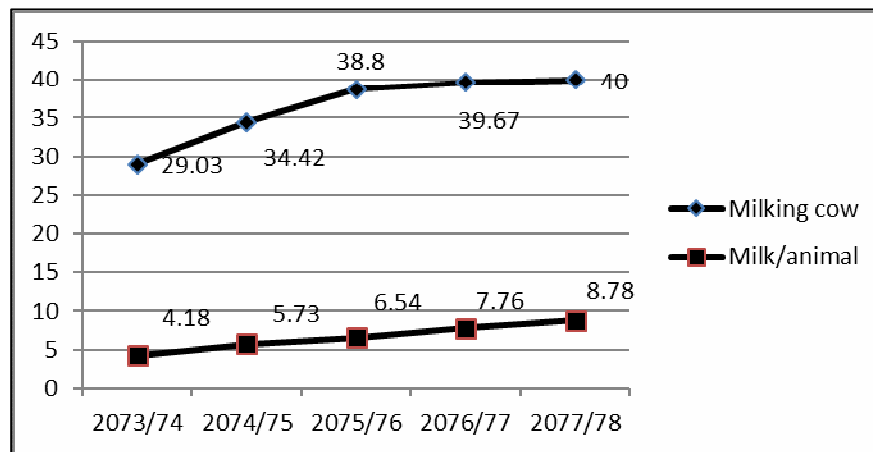


Figure 4, Trend of average Milking cows and Productivity

The productivity of the cows in the center is increased over the years which are obvious from the Figure 4. Last year milk production of milk was 7.76

Kg/animal/day which had increased to 8.78 Kg/animal/day in NFY 2077/78. During NFY 2073/74, it was only 4.18 Kg/Animal/day. The productivity of the cow has increased by 13.1 % in NFY 2077/78 when compared to productivity of cow in NFY 2076/77 (Figure 4).

5.1.4 Comparison of Age at First Calving and Calving interval

17 heifers were calved during NFY 2077/78 same no as of NFY 2076/77. From the analysis of these 17 heifers, the *age at first calving* was found to be 998.9 days as compared to 855.2 days in NFY 2076/77, which accounts 16.8 % increase in the age at first calving than previous fiscal year (Table 11). This is not satisfactory result in this Fiscal year. In order to obtain profitable milk production, the age at first calving should be decreased. In the same way 31 cows other than heifers were calved in the center in NFY 2077/78. From the study of calving of 31 cows, (Table 12) average calving interval was found to be 396.7 days as compared to 490.4 days in previous year which account 19.1 % decrease in calving intervals this is the quite satisfactory result.

5.1.5 Milk quality analysis at the center

The Ultrasonic Milk Analyzer is used to analyze quality of milk produced in the center. Milk quality of each milking cow was tested once in a month. Average SNF % was found highest (11.1 %) in Chaitra month whereas it was found lowest during Kartik month (9.8 %). The yearly average fat % was found to be 4.4 and that of SNF was 10.6 % (Table 13). Average protein content was 3.9 %. Average PH and conductivity was found to be 6.3 and 5.2 respectively.

5.1.6 Ranking of cow

The milk production of individual cow is recorded in daily basis in the center. The total milk production of individual cow is adjusted to 305 days and cows were ranked on the basis of phenotypes (milk yield). Accordingly 67 cows were categorized from highest milk yielder to lowest milk yielder. Ful Kumari is the best cow in the center, whose milk yield is 3752 liter. The highest milk yielders to lowest yielder cow are presented in Table 14.

5.1.7 Cattle outreach program

In order to increase the income of the farmers as well as to increase the improved cattle genetic resources, the center has implemented cattle outreach program by formation of cattle breeder group in different municipalities and village municipalities of the district. So far 5 cattle breeder groups have been formed. The center has supported these groups in each fiscal year with different programs. The description of the groups is given below.

S.N.	Name of group	Address	Date of Formation	Group member			Saving fund NRs
				Male	Female	Total	
1	Hariyali Dhaule cattle breeder group	Gokulganga 1, Garjyang, Ramechhap	2073/06/11	13	12	25	125000
2	Setidevi cattle breeder group	Dhunge, Jiri	2074/04/10	10	15	25	60000
3	Mathillo Sikri Tatha Chepte cattle breeder group	Sikri, Jiri 6 and 7	2074/75	20	5	25	44000
4	Jireswory cattle breeder group	Kune, Jiri 4, Dolakha	2074/75	7	18	25	15000
5	Tamakoshi cattle breeder group	Tamakoshi 3, Jafe, Dolakha	2074/75	13	13	26	13000

All these groups were formed during NFY 2074/75 except Hariyali Dhule cattle breeder group which was formed during NFY 2073/74. Partial grant was provided for all these groups to purchase 75 milking cows during NFY 2074/75. Beside this, other supportive activities such as cow keeping training, fodder tree saplings as well as seeds of alpine grasses, vaccination, insurance of the cows, farmers' visit program, and grant for cowshed improvement was provided in the same year. The support was continued during NFY 2075/76. During this fiscal year (NFY 2077/78), 100 milking steel buckets were provided to farmers of these groups. Besides Steel buckets, farmers were also provided with mineral mixtures, anthelmintic drugs, grass seeds of oat and paspalum. There were 3 day long 3 trainings regarding improved cattle keeping in NFY 2077/78. Due to the Covid 19 pandemic, these trainings couldn't be carried out.

5.2 Pig Production Unit

The center is maintaining nucleus herd of exotic breeds of pig which consists up pure line of Landrace (L) and Yorkshire (Y) along with their crossbreds (Figure 5). The produced piglets are being distributed as per the demand of the farmers. The demand for L and Y piglets is higher in Dolakha and Ramechhap districts.



Figur: Figure 5, Pigs reared in the center

5.2.1 Stock details of pig

At the end of NFY 2077/78 there were 36 pigs among which 15 were sows, 1 boar of Landrace, 4 young boar of Yorkshire. There were 1 gilt of Duroc and 2 gilt of Yorkshire. There were 13 piglets of Landrace. When breed is considered, there were 20 pig of Landrace, 2 of Duroc, 6 of Yorkshire, 7 of LY, 1 of DLY (Table 15).

5.2.2 Production, distribution, and mortality of piglets

During NFY 2077/78, altogether 181 piglets were born among which 56.9 % were male and 43.1% were female. 15 piglets died due to different reason. Among died piglets, 8 were male and 7 were female (Table 16). The mortality percentage was 8.3 %. The mortality percentage is less in this fiscal year i.e. NFY 2077/78 when compared to NFY 2076/77 where the mortality was 18.9 %. During this fiscal year NFY 2077/78, 152 piglets were distributed to the farmers as compared to 169 piglets in previous fiscal year (NFY 2076/77) which accounts 10.0 % decrease when compared to previous fiscal year 2076/77 (Table 17).

5.2.3 Age at first farrowing

During NFY 2077/78, 8 gilts were farrowed and their age at first farrowing was calculated. The age at first farrowing was found to be 410.6 days (Table 18) ranging from 347 days to 527 days. While compared with Data of previous year (NFY 2076/77), it was 347.9 days which accounts 18.0 % increase when compared with previous fiscal year (NFY 2076/77). The increase in age at first farrowing is not considered good for profitable swine keeping. There were 2 gilts which came in heat after long duration that caused average age at first farrowing to be longer.

5.2.4 Farrowing interval

During NFY 2077/78, 12 sows (other than gilt) farrowed 18 times and their respective farrowing interval was calculated. The average farrowing interval was found to be 199.44 days (Table 19) as compared to 157 days in previous NFY 2076/77. From the study the farrowing interval during this fiscal year was found to be increased by 27.0 % when compared with previous NFY 2076/77. The increase in farrowing interval is also considered bad for profitable swine keeping.

5.2.5 Pig outreach program

Pig outreach program has initiated from the center since NFY 2073/74 so as to increase the farmer's income and to make avail the better breeds of pig resources to the farmers. Here are details of pig breeder group to which the center is providing assistance for pig keeping.

a. Nigale Pig Breeder Group, Jiri-8, Dolakha

The group was formed in NFY 2073/74 which comprised of 25 members. It has accumulated NRs 25,000.00 in its saving fund up to this fiscal year NFY

2077/78. 27 piglets (25 females and 2 male) were distributed in NFY 2074/75 in free of cost and other supportive activities also carried out such as drenching, vaccination and training programs etc. The follow-up programs such as drenching, vaccination were continued during this NFY 2077/78.

b. Dumariya Pig Breeder Group, Dumariya-1, Sunsari

The group was formed during NFY 2075/76 where there are 15 members altogether. 32 piglets (30 females and 2 male) were distributed to this group in the same fiscal year. Beside this, they were provided with other supporting activities such as drenching, vaccination and the same supportive programs were continued during this NFY 2077/78.

5.3 Pasture and Range Land Management Unit (PARMU)

The center has around 30 Ha (20 Ha in Jiri and 10 Ha in Khimti) of cultivated forage area and 120 Ha (39 Ha in Jiri and 81 Ha in Khimti) permanent pasture area for grazing cattle (Table 1).

Permanent pasture land constitutes Ryegrass (*Lolium perenne*), Paspalum (*Paspalum dilatatum*) (Figure 6), Kikuyu (*Pennisetum clandestinum*), White clover (*Trifolium repens*), Dubo (*Cynolon dactylon*) and other local grasses. The cultivated forage constitutes Oat (*Avena sativa*), Maize (*Zea mays*), Setaria (*Setaria speculata*) and Napier (*Pennisetum perpureum*).



Figure 6: Hay cutting in the field

During this NFY 2077/78, about 127.1 Kg of forage seed was produced. Out of which, Paspalum (*Paspalum dilatatum*) accounts 96.6 Kg and Ryegrass (*Lolium perenne*) accounts 30.5 Kg (Table 20). About half of this amount was distributed to the farmers.

In the center, Cattle are allowed 7 to 8 hours a day throughout the year for grazing. They are carried in pastures land immediately after milking and then brought back to shed after completion of allotted grazing time. The grasses is collected from cut and carry system (by workers) and then is chaffed and allowed to wilt for a night and provided to cattle in next evening. Dry season exists during

winter especially from Marg to Baisakh (almost 6 month), during which pasture land is almost devoid of green grasses. Cattle are fed with hay and maize silage mixed with cultivated Rye grass, Oat and Vetch green fodder during dry season.

Concentrate ration is given to cattle in the evening while milking. During milking in morning, animals are provided Khole (cracked maize and mustard cake mixed with water and cooked for a while). Special attention is provided to calves, milking, pregnant and sick animals.

5.3.1 Hydroponics forage production

The Center has a "Hydroponics Fodder Production Machine" to meet the feed deficit during dry (lean period). It exists as a display in the center to demonstrate public as a new technology for animal feeding. It has the capacity of 500 Kg forage production per day. It came into operation during NFY 2075/76 in the center. About 147 Mt forage was produced by using wheat and maize seeds during that NFY 2077/78. The so produced forage (Figure 7) is offered to milking and pregnant cows. The effect and impact of hydroponic forage in milk production is still under study. Although few positive impacts are realized in terms of quantity and quality of milk, its effects yet to be verified by scientifically and Data available in the center needs detail analysis before drawing any conclusion. During NFY 2077/78, 320 Kg of Hydroponic fodder/day was produced and fed to cows during dry period. The Hydroponic unit is operated from the month of Marg to Baisakh.



Figure 7: Hydroponics forage production

6 Major annual activities and progress in NFY 2077/78

The center had 240 and 297.1 Lakh budget for NFY 2077/78 under the capital and recurrent budget heading respectively. The total budget was NRs 537.1 Lakh. Following were major program under capital budget heading

- Completion of laboratory building which was unfinished previously
- Construction of cattle shed
- Construction of pig shed
- Completion of cattle shed which was unfinished previously in Khimti

- Purchase of power tiller
- Purchase, installation and operation of Milking machine
- Supply of clean drinking water in "Bhandar Goth" for cows
- Construction of Dispensary Tahara with Trevis
- Renovation of old fencing in Jiri
- Cleaning and maintenance of old drainage in grazing as well as grass plots
- Doing "Koramasino" in Lower part of wall of old cow shed and maintenance of Manger and gutter
- Furniture purchase for Office and Laboratory

Under the recurrent budget, there were programs management and maintenance of cattle nucleus herd, management of nucleus herd of swine as well as its promotion, multiplier herds management and promotion programs (outreach resource center development and management), dissemination of technical knowhow etc.

The detailed programs of NFY 2077/78 and its target and progress achieved is presented in Table 21. The weightage progress, weightage progress percentage, expenditure, financial progress percentage is given in Table 22.

7 Lists of Inventories

The detailed lists of inventories that belongs to the center are presented in Table 23. Few of them need to be repaired while others are in good condition

8 Price of products and goods

All the milk produced in the center was sold at the price rate of NRs 55.15 per Kg in NFY 2077/78. This price was fixed by Tender call invited by the center. From the tender bid, Dolakha Dairy Udhyog Limited, Charikot, Dolakha agreed to purchase milk at higher price i.e. NRs 55.15 per Kg. Produced milk in the center is stored in Chilling vat owned by office. The Dairy industry collects milk at 2-3 day interval till the volume of milk becomes sufficient to transport to Chariot via Milk Tanker. The price of other commodities offered for sale from the center is presented in Table 24.

9 Achievements and Constraints Compared to NFY 2075/076

- Milk production increased by 24.41 % compared to NFY 2076/77
- The productivity of cow increased by 13.14 %. compared to NFY 2076/77
- Calving interval of cow decreased by 19.1 % compared to NFY 2076/77
- Revenue increased by 10.28 % compared to NFY 2076/77
- Calf and piglet mortality has reduced as compared to NFY 2076/77

10 Revenue collections

The center has different sources for revenue generation. Milk sale is the major source for revenue collection. In NFY 2077/78, milk contributed 83.7 whereas piglet and live pig sale contributed 10.4 % and other sources contributed 5.9 % of total revenue. Other sources of revenue include sale of cattle manure, pig manure, grass seeds, sacks of feed, AI services and so on. The share of revenue collection during NFY 2077/78 from different commodities is presented in Table 22. The amount of revenue collected during NFY 2077/78 is NRs 85,24,956.00 (Eighty five lakh twenty four thousand nine hundred fifty six) whereas the amount during previous year was only 77,29,759.00 which indicates 10.28 % increase in revenue during NFY 2077/78. Similarly the share of milk sale in revenue generation increased to 83 % in NFY 2077/78 from 73 % in NFY 2076/77. The share of revenue collection in NFY 2077/78 is presented in Table 25. Similarly year wise revenue generated from NFY 2070/71 to 2077/78 is presented in Table 26.

11 Apporved posts and their status

The center has been allocated 10 permanent posts. During NFY 2077/78, out of 10 posts, 8 posts were fulfilled and 2 posts (Driver and assistant accountant) were vacant. Financial work of office is handled by staff of "District Treasury Controller Office, Dolakha". The detailed allotted post and their status during NFY 2077/78 is presented in Table 27. In addition to this, 11 employees for cow (9 for Jiri and 2 for Khimti) and 2 employees for pig, and 1 watchman have been hired on the daily wage basis. These hired employees carry out day to day work such as feeding, cleaning, milking, grazing of animal, cut and carry of grasses, caring of livestock (Cows and Pigs) etc. in the center (Jiri and Khimti). Description of Government employees working in the center is presented in Table 28. Similarly description of daily wage workers working in the center is presented in Table 29.

12 Problems

- Encroachment of farm land by settlers residing adjoining to the farm areas as well as different institution including local bodies.
- Lack of fencing around the land boundary in Jiri and Khimti
- Unavailability of incentives for the staffs and daily-wage basis employees involved round the clock to carry out the farm work.
- Unavailability of permanent shelter for staffs and workers as most of the shelters had been destroyed during the earthquake.
- Old drainages are not working properly in the pasture land.

13 Attempts made to solve the problems

- Request for overtime allowances, construction of building and infrastructures have been made to concerned authorities and organizations including Department of Livestock Services and Ministry of Agriculture and Livestock Development.
- Surface and underground drainage have been repaired and maintained. Constant attention has been made for the regular maintenance to prevent from further damage.
- Reconstruction of a few physical infrastructures has been completed.

List of Tables

Table 1 Land area and its allocation for different use

S.N.	Description	Land in Ha			Remarks
		Jiri	Khimti	Total	
1	Office buildings, Animal sheds, road and supporting buildings	6	4	10	
2	Forest, river and streams	19	30	49	
3	Cultivated forage areas	20	10	30	
4	Seasonal and permanent pasture land	39	81	120	
	Total	84	125	209	

Table 2 Meteorology of Jiri

Particular	Months												Average / Total
	Jan	Feb	Mar	Apr	May	Jun	Jul	Aug	Sep	Oct	Nov	Dec	
Avg. Temperature (°C)	7	8.3	12.2	15.8	17.2	19.3	19.5	19.4	18.1	15.8	11.1	7.8	14.3
Min Temperature (°C)	0.5	1.5	5.3	9.7	11.9	15.7	16.5	16.1	14.4	11	5.1	1.1	9.1
Max Temperature (°C)	13.6	15.1	19.2	22	22.6	22.9	22.6	22.7	21.8	20.6	17.1	14.5	19.6
Rainfall (mm)	16	9	31	71	157	365	577	515	300	88	9	4	2142.0

Table 3 List of Farm Managers

S.N.	Name	Designation	Tenure		Remarks
			From	To	
1	Mr. John Muller	Joint Manager	2015	2020	
2	Mr. Prayag Dutta Tiwari	Chief Officer	2018	2024	
3	Dr. Heramba Raj Rajbhandari	General Manager	2022	2024	
4	Mr. Asta Dhoj Joshi	Chief Officer	2024	2026	
5	Mr. Iswari Raj Regmi	Chief Officer	2026	2028	
6	Mr. Shankar Bahadur Adhikari	Act. Chief Officer	2028	2030	
7	Mr. Ram Chandra Gupta	Chief Officer	2031	2031	
8	Mr. Ram Milan Upadhyay	Act. Chief Officer	2032	2038	
9	Mr. Shankar Bahadur Adhikari	Act. Chief Officer	2038	2038	
10	Mr. Shatrughan Lal Pradhan	Act. Chief Officer	2038	2041	
11	Mr. Dala Ram Pradhan	Act. Chief Officer	2041	2041	
12	Mr. Renu Bahadur KC	Act. Chief Officer	2041	2042	

S.N.	Name	Designation	Tenure		Remarks
			From	To	
13	Mr. Ram Milan Upadhyay	Act. Chief Officer	2042	2042	
14	Mr. Renu Bahadur KC	For Chief Officer	2042	2045	
15	Mr. Yogendra Raut	Act. LDO	2045	2048	
16	Mr. Nathu Prasad Chaudhary	LDO	2048	2049	
17	Mr. Parsanna Kumar Koirala	LDO	2049	2049	
18	Mr. Sudarsan Prasad Regmi	LDO	2050	2050	
19	Mr. Mani Kumar Shrestha	LDO	2051	2052	
20	Mr. Yadunath Sharma	LDO	2052	2055	
21	Mr. Sudarsan Prasad Regmi	LDO	2055	2059	
22	Mr. Gyan Bahadur Thapa	LDO	2059/02/01	2062/02/30	
23	Mr. Chhabilal Adhikari	LDO	2062/02/31	2062/05/31	
24	Dr. Dinesh Prasad Parajuli	Senior LDO	2062/06/01	2063/09/04	
25	Mr. Chhabilal Adhikari	LDO	2063/09/05	2066/02/24	
26	Dr. Narayan Prasad Sharma	Senior LDO	2066/02/25	2068/03/23	
27	Mr. Tanka Kumar Shrestha	LDO	2068/03/24	2068/05/22	
28	Mr. Purna Prasad Manandhar	Senior LDO	2068/05/23	2069/10/19	
29	Dr. Dharma Raj Giri	LDO	2069/10/20	2069/12/30	
30	Dr. Sudhir Kumar Singh	Senior LDO	2070/01/02	2072/10/25	
31	Mr. Gana Bahadur Jirel	LDO	2072/10/26	2075/04/22	
32	Mr. Shankar Sah	Senior LDO	2075 /05/01	2076/09/27	
33	Shiva Prakash Acharya	Senior LDO	2076/10/06	2077/10/27	
34	Dr. Gopal Giri	Senior LDO	2078/01/06	to-date	

Table 4 Stock details of cattle at the end of NFY 2077/78

S.N.	Categories of cattle	No.	%
1	Male Calves less than 6 month old	10	8
2	Male calves greater than 6 month and less than 24 month	9	7.2
3	Breeding bull (Cattle/Buffalo) greater than 24 month	6	4.8
4	Female calves less than 6 month	12	9.6
5	Heifer greater than 6 month and less than 24 month	13	10.4
6	Adult cow	75	60
Grand Total		125	100

Table 5 Breed wise list of cattle more than a year old

S.N.	Tag no	Name of cow	Date of Birth
A	Jersey Breed		
1	22234	Tanki	2016/01/23
2	22623	Fulmaya	2018/01/07
3	21997 (22206)	Sakira	2015/06/07
4	22626	Kasturi	2018/03/18
5	22208	Nikita	2015/06/29
6	22202/22009	Trishna	2015/04/02
7	22299	Kunta	2017/07/30
8	22603	Kiran	2017/08/05
9	22690	Chandra	2011/12/27
10	21994 (22265)	Chitra	2016/12/27
11	22271	Nabina	2017/02/09
12	22001 (9818)	Karishma	2010/04/23
13	22205 / 22688	Niruta	2015/06/04
14	22213	Suman	2015/09/02
15	21996 (71570)	Kaushila	2017/12/07
16	22498	Ranju	2018/04/09
17	22406	Subi	2018/05/04
18	22404	Naina	2018/04/24
19	21999 (71577)	Maina	2018/03/24
20	22416	Himali	2018/04/12
21	71569	Khairi	2017/12/08
22	71572	Ramri	2018/03/10
23	71573/21906	Laxmi	2018/04/08
24	21998 (71575)	Nisha	2018/02/21
25	22215	Soniya	2015/09/29
26	22220	Sanjha	2015/10/31
27	22242 (9950)	Tamana	2016/02/20
28	22628	Uttisa	2018/03/19
29	22631	Sashikala	2018/05/28
30	22601	Isha	2017/08/02
31	22606	Lalima	2017/08/17
32	22638	Sanju	2018/07/04
33	22674	Kamdhenu	2019/06/22
34	22671	Tasina	2019/06/04
35	22004	Gauri	N/A
36	22604	Mamata	2017/08/08
37	22643	Pushpa	2018/08/08

S.N.	Tag no	Name of cow	Date of Birth
38	22667	Bipana	2019/01/26
39	22669	Fulmali	2019/03/02
40	22654	Tari ka	2019/03/10
41	22659	Sonu	2019/02/24
42	22681	Talina	2019/09/21
43	22687	Lebina	2019/11/25
44	22676	Chameli	2019/07/18
45	22679	Safira	2019/09/05
46	22694	Kesari	2020/01/31
47	22685	Sabina	2019/09/29
48	22908	Shumana	2020/03/05
49	21911	Krishna Kumari	2020/03/26
50	21914	Sonisha	2020/04/01
51	21916	Lal Kumari	2020/04/11
52	21918	Teriya	2020/04/17
53	21921	Himani	2020/05/19
54	21926	Phulu	2020/06/29
B	Holstein Friesian Breed		
1	21904 (238)	Sarita (kha)	2012/11/12
2	22449	Jhali	2018/04/09
3	22401	Tari	2017/12/16
4	22499	Ramila	2018/03/24
5	22407	Sangita	2018/04/01
6	2548	Muna	2018/01/11
7	22409	Kaili	2074/10/30
8	22405	Pokhreli	2018/01/13
9	2543	Mali	2018/02/04
10	22411	Radha	2018/04/14
11	22480	Ujeli	2018/03/10
12	71574	Nauli	2018/03/05
13	21924	Manisha	2020/05/31
C	Cross of HF and Jeresey (JHF)		
1	21901	Usha	2012/07/31
2	22255	Kariya	2009/04/23
3	104	Lila Kumari	2012/06/25
4	22274	Mandakini	2010/03/13
5	235	Bimali	2012/11/06
6	9834	Samjhana	2011/07/26

S.N.	Tag no	Name of cow	Date of Birth
7	21905 (9841)	Kunti	2010/06/20
8	113	Tetari	2012/01/30
9	22258	Furki	N/A
10	22263 (9920)	Kumari	2014/02/03
11	22010 (9917)	Kritika	2014/03/14
12	21903 (244)	Reshmi	2013/04/28
13	22217	Sakuntala	2006/10/19
14	21902	Lalita	2008/01/15
15	22637	Bindeshwori	2010/07/31
16	22695 (102)	Tashi	2012/02/07
17	22273	Tara	2006/08/02
18	22644	Maya	2014/04/15
19	9817	Sarita	2011/02/18
20	9905	Menuka	2013/08/14
21	22259	Ful Kumari	2015/12/03

Table 6 Month-wise number of dead cattle in NFY 2077/78

S.N.	Month	Number of dead cattle				Total
		Large		Small		
		Male	Female	Male	Female	
1	Shrawan			2	0	2
2	Bhadra			3	1	4
3	Ashwin					
4	Kartik			2		2
5	Magh					
6	Poush				1	1
7	Magh					
8	Falgun					
9	Chaitra		1	3		4
10	Baishakh					
11	Jestha				1	1
12	Ashadh					
	Total	0	2	10	3	15

Table 7 Year-wise trend of calves born and their mortality

S.N.	NFY	Calf Production			No of Dead calves	Mortality %
		Male	Female	Total		
1	2061/062	9	4	13	2	15.38
2	2062/063	6	5	11	1	9.09
3	2063/064	16	12	28	3	10.71
4	2064/065	10	12	22	1	4.55
5	2065/066	14	16	30	3	10.00
6	2066/067	14	8	22	0	0.00
7	2067/068	25	7	32	0	0.00
8	2068/069	21	20	41	5	12.2
9	2069/070	8	11	19	2	10.53
10	2070/071	16	16	32	2	6.25
11	2071/072	8	15	23	2	8.70
12	2072/073	21	24	45	7	15.56
13	2073/074	10	9	19	2	10.53
14	2074/075	23	26	49	4	8.16
15	2075/076	12	19	31	9	29.03
16	2076/077	25	20	45	17	37.7
17	2077/078	27	21	48	13	27.1

Table 8 Month wise AI services carried out in center

S.N.	Month	AI inside farm	AI outside farm
1	Shrawan	6	9
2	Bhadra	2	11
3	Ashoj	5	8
4	Kartik	7	8
5	Mangsir	5	10
6	Poush	4	9
7	Magh	3	12
8	Falgun	1	7
9	Chaitra	7	8
10	Baishakh	6	10
11	Jestha	4	9
12	Ashad	5	10
Sub total		55	111
Grand Total		166	

Table 9 Year wise AI Services and distribution of bull

S.N.	Descriptions	NFY						
		2071/72	2072/73	2073/74	2074/75	2075/76	2076/77	2077/78
1	AI Service (No)	220	134	230	180	175	130	166
2	Bull distributions (No)	7	4	1	1	-	-	-

Table 10 Milk production

S.N.	Month	Milking cow (No.)	Total	Milk/day	Milk/ animal/ day	Highest yield	Cow name	Tag no
1	Shrawan	41.9	13302.3	415.7	9.9	17.84	Fulkumari	22259
2	Bhadra	41.8	12471.8	402.3	9.6	15.5	Fulkumari	22259
3	Aswin	42.2	12060.0	402.0	9.5	12.1	Bindeshwori	22637
4	Kartik	42.8	11524.0	384.1	9.0	13.26	Fulkumari	22259
5	Marg	39.7	10065.0	335.5	8.5	12.06	Fulkumari	22259
6	Poush	37.7	9464.0	325.3	8.6	11.9	Fulkumari	22259
7	Magh	38.2	10190.2	330.6	8.7	13.5	Tanki	22234
8	Falgun	37.2	9800.5	337.9	9.1	18.1	Furki	22258
9	Chaitra	40.7	11190.0	361.0	8.9	14	Suman	22213
10	Baisakh	39.3	8293.9	267.5	6.8	10.5	Kumari	22000
11	Jestha	39.0	9262.4	298.8	7.7	11.7	Kritika	22010
12	Aashad	39.4	11758.1	379.3	9.1	14.3	Chitra	22265
Total/ average		40.0	129382.2	351.0	8.78			

Table 11 Age at first calving

S.N.	Tag no	Name of cow	Date of Birth	Breed	Calving date	Difference (Days)
1	22449	Jhali	12/26/2074	J	12/7/2077	1076
2	22401	Tari	9/1/2074	HF	5/18/2077	992
3	22498	Ranju	12/26/2074	J	10/24/2077	1034
4	22406	Subi	1/21/2075	J	3/3/2078	1140
5	22499	Ramila	12/10/2074	HF	10/25/2077	1051
6	22404	Naina	1/11/2075	J	9/11/2077	977
7	21999 (71577)	Maina	12/10/2074	J	10/8/2077	1034
8	22407	Sangita	12/18/2074	HF	10/30/2077	1048
9	71569	Khairi	8/22/2074	J	7/3/2077	1046
10	22405	Pokhreli	9/29/2074	HF	6/20/2077	997
11	71572	Ramri	11/26/2074	J	3/31/2077	858
12	21906	Laxmi	12/25/2074	J	5/11/2077	872
13	21998 (71575)	Nisha	11/9/2074	J	5/26/2077	933
14	22411	Radha	1/1/2075	HF	4/28/2077	851
15	22480	Ujeli	11/26/2074	HF	9/5/2077	1016
16	71574	Nauli	11/21/2074	HF	6/29/2077	955
17	22601	Isha	4/18/2074	J	4/23/2077	1101
Average (Days)						998.9

Table 12 Calving intervals

S. N.	Tag no	Name of cow	Date of Birth	Breed	Parity	Calving date in BS	Date of preceding calving BS	Calving interval (days)
1	22234	Tanki	10/9/2072	J	2	9/18/2077	5/25/2076	479
2	22623	Fulmaya	9/23/2074	J	3	11/17/2077	11/4/2076	379
3	21904 (238)	Sarita (kha)	7/27/2069	HF	4	6/6/2077	6/12/2076	359
4	22626	Kasturi	12/4/2074	J	2	10/24/2077	11/5/2076	355
5	22274	Mandakini	11/29/2066	JHF	6	4/6/2077	2/24/2076	410
6	9834	Samjhana	4/10/2068	JHF	7	2077/04/31	5/19/2076	345

S. N.	Tag no	Name of cow	Date of Birth	Breed	Parity	Calving date in BS	Date of preceding calving BS	Calving interval (days)
7	22299	Kunta	4/15/2074	J	2	1/24/2078	10/17/2076	462
8	113	Tetari	10/16/2068	JHF	4	6/17/2077	5/25/2076	388
9	22603	Kiran	4/21/2074	J	2	10/24/2077	10/17/2076	372
10	22258	Furki		JHF	8	10/6/2077	9/28/2076	372
11	22690	Chandra	9/12/2068	J	5	4/14/2077	4/2/2076	377
12	22690	Chandra	9/12/2068	J	6	1/6/2078	4/14/2077	264
13	21994 (22265)	Chitra	9/12/2073	J	2	2/20/2078	10/27/2076	479
14	22263 (9920)	Kumari	10/20/2070	JHF	4	10/23/2077	11/11/2076	348
15	22010 (9917)	Kritika	11/30/2070	JHF	4	1/16/2078	12/13/2076	399
16	22001 (9818)	Karishma	1/10/2067	J	6	11/2/2077	10/10/2076	387
17	22213	Suman	5/16/2072	J	3	11/25/2077	11/22/2076	369
18	21996 (71570)	Kaushila	8/21/2074	J	2	9/19/2077	9/4/2076	380
19	22411	Radha	1/1/2075	HF	2	2/24/2078	4/28/2077	299
20	22215	Soniya	6/12/2072	J	3	2/2/2078	12/19/2076	410
21	22217	Sakuntala	7/2/2063	JHF	9	5/17/2077	3/24/2076	421
22	22637	Bindeshwori	4/15/2067	JHF	6	4/18/2077	10/25/2075	541
23	9817	Sarita	11/6/2067	JHF	6	11/25/2077	11/5/2076	386
24	9905	Menuka	4/30/2070	JHF	4	6/5/2077	5/23/2076	378
25	22242 (9950)	Tamana	11/8/2072	J	2	6/5/2077	12/3/2075	554
26	22259	Ful Kumari	8/17/2072	HF	2	3/8/2078	3/15/2077	358
27	22638	Sanju	3/20/2075	J	2	2/1/2078	1/24/2077	374
28	22632	Jhuma	2/21/2075	J	2	1/3/2078	11/15/2076	414
29	22601	Isha	4/18/2074	J	2	3/19/2078	4/23/2077	330
30	22604	Mamata	4/24/2074	J	2	3/22/2078	12/27/2076	453
31	2543	Mali	10/21/2074	HF	2	3/28/2078	12/30/2076	456
Average								396.7

Table 13: Milk quality analysis

S.N.	Month	No of sample (No of milking cows)	Average					Remarks
			Fat %	SNF %	Protein %	PH	Conductivity	
1	Shrawan	43	4.2	10.7	3.8	6.2	5.2	
2	Bhadra	40	4.4	10.5	3.8	6.1	4.2	
3	Aswin	39	4.5	10.1	3.9	6.3	5.2	
4	Kartik	34	4.5	9.8	3.8	6.1	5.3	
5	Marg	31	4.8	10.8	3.9	6.3	5.2	
6	Poush	32	4.5	11.0	4.0	6.3	5.3	
7	Magh	31	4.3	10.8	3.9	6.3	5.3	
8	Falgun	43	4.2	10.7	3.9	6.4	5.4	
9	Chaitra	41	4.3	11.1	3.8	6.4	5.3	
10	Baisakh	43	4.5	10.8	3.8	6.2	5.4	
11	Jestha	41	4.3	10.5	3.8	6.2	5.4	
12	Aashad	44	4.3	10.5	3.8	6.2	5.5	
Annual Average			4.4	10.6	3.9	6.3	5.2	

Table 14: Ranking of Cow on the basis of milk production

S. N.	Name of cow	Tag no	Date of Birth	Parity	Milking days	Total milk in Kg	Adjusted Milk /Lactation	Average daily milk (Kg)
1	Ful Kumari	22259	8/17/2072	1	271.5	3340	3752.12	12.3
2	Furki	22258	N/A	8	604.5	6901.2	3481.99	11.4
3	Mali	2543	10/21/2074	1	182.5	2016.9	3370.64	11.1
4	Soniya	22215	6/12/2072	2	578	6185.5	3263.99	10.7
5	Mandakini	22274	11/29/2066	6	523.5	5476.3	3190.6	10.5
6	Kritika	22010 (9917)	11/30/2070	4	559.5	5754	3136.67	10.3
7	Lalita	21902	10/1/2064	6	543.5	5555.6	3117.65	10.2
8	Reshmi	21903 (244)	1/15/2070	5	362.5	3506.4	2950.19	9.7
9	Nikita	22208	3/14/2072	2	514.5	4963.1	2942.18	9.6
10	Tashi	22695 (102)	10/24/2068	3	583.5	5565.1	2908.9	9.5
11	Karishma	22001 (9818)	1/10/2067	6	531.5	5063.3	2905.56	9.5

S. N.	Name of cow	Tag no	Date of Birth	Parity	Milking days	Total milk in Kg	Adjusted Milk /Lactation	Average daily milk (Kg)
12	Trishna	22202	12/19/2071	2	451	4280.8	2895.01	9.5
13	Kumari	22263 (9920)	10/20/2070	4	659.5	6258.7	2894.49	9.5
14	Bindeshwori	22637	4/15/2067	6	198.5	1859	2856.4	9.4
15	Maina	21999 (71577)	12/10/2074	1	170.5	1595.1	2853.39	9.4
16	Tanki	22234	10/9/2072	2	518	4841.7	2850.81	9.3
17	Sarita	9817	11/6/2067	6	529	4932.1	2843.64	9.3
18	Kunti	21905 (9841)	3/6/2067	5	470	4381.6	2843.4	9.3
19	Chandra	22690	9/12/2068	6	497	4595.2	2820.01	9.2
20	Mamata	22604	4/24/2074	1	259	2393	2817.99	9.2
21	Sarita Kha	21904 (238)	7/27/2069	4	598	5498.2	2804.26	9.2
22	Lalima	22606	5/1/2074	1	294.5	2691	2786.99	9.1
23	Sashikala	22631	2/14/2075	1	130.5	1185.4	2770.44	9.1
24	Gauri	22004	N/A	1	301	2715.7	2751.81	9
25	Chitra	21994 (22265)	9/12/2073	2	291	2595	2719.86	8.9
26	Suman	22213	5/16/2072	3	595.5	5294.8	2711.88	8.9
27	Ramri	71572	11/26/2074	1	316.5	2789.2	2687.82	8.8
28	Kunta	22299	4/15/2074	2	424	3699.3	2661.02	8.7
29	Niruta	22688 (22205)	2/21/2072	1	415.5	3602.8	2644.68	8.7
30	Muna	2548	9/27/2074	1	293.5	2540.8	2640.32	8.7
31	Ujeli	22480	11/26/2074	1	183	1579.1	2631.83	8.6
32	Kaushila	21996 (71570)	8/21/2074	2	440.5	3794.9	2627.6	8.6
33	Tara	22273	4/17/2063	10	420.5	3618.1	2624.28	8.6
34	Nabina	22271	10/27/2073	2	544.5	4678.2	2620.47	8.6
35	Kasturi	22626	12/4/2074	2	397	3405.8	2616.58	8.6
36	Bimali	235	7/21/2069	4	375.5	3198.2	2597.75	8.5
37	Tamana	22242 (9950)	11/8/2072	2	322.5	2741.3	2592.53	8.5
38	Sakuntala	22217	7/2/2063	9	642.5	5347.8	2538.64	8.3
39	Sangita	22407	12/18/2074	1	149	1233.4	2524.74	8.3
40	Tetaari	113	10/16/2068	4	574.5	4697.6	2493.93	8.2
41	Tari	22401	9/1/2074	1	283	2310.2	2489.77	8.2
42	Usha	21901	4/16/2069	5	517.5	4185.4	2466.77	8.1

S. N.	Name of cow	Tag no	Date of Birth	Parity	Milking days	Total milk in Kg	Adjusted Milk /Lactation	Average daily milk (Kg)
43	Isha	22601	4/18/2074	1	276	2231	2465.41	8.1
44	Nisha	21998 (71575)	11/9/2074	1	260	2092.3	2454.39	8
45	Kiran	22603	4/21/2074	2	390.5	3133.1	2447.08	8
46	Pokhereli	22405	9/29/2074	1	240.5	1894.3	2402.35	7.9
47	Nauli	71574	11/21/2074	1	209	1611	2351.04	7.7
48	Maya	22644	1/2/2071	3	246.5	1896.6	2346.73	7.7
49	Khairi	71569	8/22/2074	1	235	1802.1	2338.93	7.7
50	Uttisa	22628	12/5/2074	1	355	2698.1	2318.05	7.6
51	Radha	22411	1/1/2075	2	173.5	1301.7	2288.22	7.5
52	Laxmi	21906	12/25/2074	1	248	1857.5	2284.37	7.5
53	Sakira	21997 (22206)	2/24/2072	2	373	2786	2278.12	7.5
54	Samjhana	9834	4/10/2068	7	498	3687.8	2258.6	7.4
55	Kariya	22255	1/10/2066	7	372.5	2741.2	2244.46	7.4
56	Ranju	22498	12/26/2074	1	156	1146.9	2242.3	7.4
57	Lil Kumari	104	3/11/2069	4	506.5	3718.2	2239.02	7.3
58	Kaili	22409	10/30/2074	1	195.5	1424.9	2223.01	7.3
59	Naina	22404	1/11/2075	1	170	1190.4	2135.72	7
60	Ramila	22499	12/10/2074	1	155	1064.2	2093.98	6.9
61	Sanjha	22220	7/14/2072	2	270.5	1815.9	2047.55	6.7
62	Jhuma	22632	2/21/2075	2	318	2095.3	2009.65	6.6
63	Bindeshwori	22637	4/15/2067	6	257.5	1692.3	2004.45	6.6
64	Fulmaya	22623	9/23/2074	2	301.5	1888.5	1910.45	6.3
65	Sanju	22638	3/20/2075	2	170	989.3	1774.83	5.8
66	Himali	22416	12/29/2074	1	158	814.1	1571.53	5.2

Table 15: Stock of pig at the end of NFY 2077/78

S.N.	Categories of pig	Unit	L	D	Y	LY	DLY	Total	%
1	Sow	No	6	1		7	1	15	41.7
2	Boar	No	1		4			5	13.9
3	Gilt	No		1	2			3	8.3
4	Piglets	NO	13					13	36.1
Total			20	2	6	7	1	36	100.0

Table 16 Production and mortality of piglets

S.N.	Month	Piglets No						Mortality %
		Born			Dead			
		Male	Female	Total	Male	Female	Total	
1	Shrawan	5	5	10	2		2	1.1
2	Bhadra							
3	Asoj	25	14	39				
4	Kartik	18	12	30		1	1	0.6
5	Marg	2	3	5				
6	Paush							
7	Magh							
8	Falgun	32	23	55		1	1	0.6
9	Chaitra							
10	Baishakh	10	9	19		1	1	0.6
11	Jestha	11	12	23	6	4	10	5.5
12	Ashadh							
Grand Total		103	78	181	8	7	15	8.3

Table 17 Production and distribution of piglets

S.N.	Descriptions	NFY							
		2070/71	2071/72	2072/73	2073/74	2074/75	2075/76	2076/77	2077/78
1	Production (No)	210	210	161	154	152	209	212	191
2	Dead (No.)							40	15
3	Distribution (No)	190	168	180	81	150	148	169	152

Table 18: Age at first farrowing

S.N.	Tag No.	Breed	Date of Birth in AD	Farrowing Date AD	Days of first farrowing
1	1819/456	LxY	5/22/2019	10/30/2020	527
2	482 (821)	L	12/1/2019	6/13/2021	560
3	7437	LxY	5/22/2019	5/3/2020	347
4	486 (7446)	D	4/28/2019	4/15/2020	353
5	887	L	2/16/2019	4/27/2020	436
6	823	L	12/1/2019	11/25/2020	360
7	2382	LxY	5/22/2019	5/4/2020	348
8	822	L	12/1/2019	11/19/2020	354
Total					3285
Average					410.6

Table 19: Farrowing interval

S.N.	Tag no	Farrowing no	Parity	Farrowing date AD	Date of Preceding Farrowing AD	Farrowing interval
1	460/123	1	10	10/1/2020	4/29/2020	155
		2	11	3/3/2021	10/1/2020	153
2	481(453/ 883)	3	6	3/4/2021	2/6/2020	392
3	483 (19045)	4	2	9/27/2020	4/30/2020	150
4	497	5	3	9/27/2020	4/26/2020	154
		6	4	3/2/2021	9/27/2020	156
5	7437	7	2	9/30/2020	5/3/2020	150
6	496	8	5	10/24/2020	4/26/2020	181
		9	6	5/30/2021	10/24/2020	218
7	494 (893)	10	7	10/30/2020	5/24/2020	159
8	486 (7446)	11	2	11/10/2020	4/15/2020	209
		12	3	6/9/2021	11/10/2020	211
9	887	13	4	2/19/2021	4/27/2020	298
10	328 (493)	14	5	7/26/2020	1/1/2020	207
		15	6	2/16/2021	7/26/2020	205
11	2382	16	2	10/5/2020	1/1/2020	278
		17	3	3/1/2021	10/5/2020	147
12	822	18	2	5/5/2021	11/19/2020	167
Total						3590
Average						199.44

Table 20 Details of forage seed production and distribution

S.N.	Forage seeds	NFY							
		2070/71	2071/72	2072/73	2073/74	2074/75	2075/76	2076/77	2077/78
1	Production (Kg)	270	280	300	305	258	402	190	127.1
2	Distribution (Kg)	270	280	300	220	258	259	95	60

Table 21 Activities (Target Vs achievement) NFY 2077/78

S.N.	Programs	Unit	Target	Weightage	Budget (in Lakh)	Progress
A	Capital Budget					
1	Completion of laboratory building which was unfinished previously	No.	1	4.1	22	1
2	Construction of cattle shed	No.	1	14.9	80	1
3	Construction of pig shed	No.	1	14.9	80	1
4	Completion of cattle shed which was unfinished previously in Khimti	No.	1	3.72	20	1
5	Purchase of power tiller	Times	1	0.47	2.5	1
6	Purchase, installation and operation of Milking machine	Times	1	0.93	5	1
7	Supply of clean drinking water in "Bhandar Goth" for cows	Times	1	0.93	5	1
8	Construction of Dispensary Tahara with Trevis	Times	1	1.86	10	1
9	Renovation of old fencing in Jiri	Times	2	0.47	2.5	2
10	Cleaning and maintenance of old drainage in grazing as well as grass plots	Times	1	0.56	3	1
11	Doing "Koramasino" in Lower part of wall of old cow shed and maintenance of Manger and gutter	Times	1	1.68	9	1
12	Furniture purchase for Office and Laboratory	Times	1	0.19	1	1
	Capital Budget Sub total			44.69	240	
B	Recurrent Budget					
1	Publication of annual progress report	No.	1	0.09	0.5	1
2	Notice dissemination through magazine and Radio	Times	6	0.09	0.5	6
3	Recruitment of security personnel	Month	24	0.98	5.28	24
4	Website renewal and update	Times	1	0.06	0.3	1
5	Uniform for recruited staffs	No.	1	0.02	0.1	1

S.N.	Programs	Unit	Target	Weightage	Budget (in Lakh)	Progress
6	Recruitment of Driver	Month	13	0.53	2.86	13
7	Fuel for Tractor	Lt	2000	0.37	2	2000
8	Basic laboratory (Reagent, chemical as well as necessary equipment purchase)	Times	2	0.28	1.5	2
9	Operation of AI service	Times	12	0.34	1.8	12
10	Establishment and management of of nursery with Tunnel	Times	2	0.58	3.1	2
11	Travel allowance for visit of Outreach resource program and Khimti area	Month	12	0.67	3.6	12
12	Participating in Workshop, training program	Times	6	0.22	0.2	6
13	Attending meeting of office chief organized by DAO and conducting budget release work	Times	18	0.28	1.5	18
14	Insurance of vehicle and livestock	Times	3	0.37	1.98	3
15	Miscellaneous expenditure for program management	Month	12	0.28	1.5	12
16	Management and maintenance of cattle Nucleus herd					
16.1	Jersey Nucleus herd management	No.	100	13.03	70	100
16.2	Calves production	No.	25	1.68	9	48
16.3	Male calves and breeding bull management	No.	30	1.12	6	30
16.4	Management of cows born through sexed semen	No.	23	2.79	15	23
16.5	Management of buffalo bull and cattle bull in Khimti cattle breeding center	No.	3	0.28	1.5	3
16.6	Expansion of perennial grass and fodder tree in Jiri farm	Ha	1	0.11	0.6	1
16.7	Expansion of perennial grass and fodder tree in Khimti	Ha	1	0.11	0.6	1
16.8	Hay production in Jiri	MT	200	0.88	4.75	200
16.9	Hay production in Khimti	MT	30	0.19	1	30
16.10	Silage preparation in Jiri	MT	250	0.56	3	250
16.11	Silage preparation in Khimti	MT	75	0.23	1.25	75
16.12	Green grass production (Oat/vetch 5 ha Jiri	Ha	5	0.56	3	5
16.13	Green grass production (Oat/vetch 1 ha, Maize/cowpea 1 ha) in Khimti with irrigation and fencing	Times	2	0.19	1	2
16.14	AI program initiation in Khimti	Times	3	0.56	3	3

S.N.	Programs	Unit	Target	Weightage	Budget (in Lakh)	Progress
16.15	Operation of Hydroponic unit for livestock feeding during dry season	Month	7	1.96	10.5	7
16.16	Rye grass seed production	Kg	40	0.09	0.5	30.5
16.17	Paspalum seed production	Kg	150	0.18	0.99	96.6
16.18	Plot extension and management for grass seed production in Khimti with fencing	Ha	1	0.93	5	1
16.19	Plot extension and management for grass seed production in Jiri with fencing	Ha	1	0.93	5	1
16.20	Drenching, Vaccination and treatment of cattle	Times	3	0.56	3	3
17	Management of Nucleus herd of Swine as well as its promotion					
17.1	Keeping nucleus herd of swine (mothers) (feed, labor and other production materials)	No.	20	2.79	15	20
17.2	Replacement pig keeping	No.	8	0.63	3.4	8
17.3	Piglet production	No.	230	1.84	9.9	191
17.4	Purchase of replacement stock	No.	8	0.19	1	8
17.5	Drenching, vaccination and treatment of pigs	Times	3	0.19	1	3
18	Multiplier herds management and promotion programs (Outreach resource center development and management)					
18.1	Cow keeping training (3 days)	Times	3	0.5	2.7	0
18.2	Swine keeping training (3 day)	Times	1	0.19	1	0
18.3	Follow up of outreach programs in Khawa and Ramdhuni	Times	6	0.22	1.2	6
18.4	Collection, evaluation and management of Data related to technical parameter of pigs in coordination with local breeders groups	No.	3	0.15	0.89	3
18.5	Mobilization and follow up of cow breeding group (Grass seed, medicine, milk can distribution)	No.	15	0.84	4.5	15
18.6	Distribution of steel bucket in breeder groups for clean milk production	No.	75	0.28	1.5	100
18.7	Collection, evaluation and management of Data related to technical parameter of cows in coordination with local breeders groups	No.	3	0.11	0.6	3

S.N.	Programs	Unit	Target	Weightage	Budget (in Lakh)	Progress
18.8	Formation and mobilization of breeder group by involving farmers living in adjoining areas of farm	No.	1	0.15	0.8	1
19	Dissemination of technical know how					
19.1	Observing farm day	Times	1	0.12	0.65	1
19.2	Preparation of display board (flex print etc) for technology dissemination	Times	2	0.15	0.8	2
Recurrent Budget sub total				55.31	297.08	
Grand Total				100	537.1	

Table: 22 Progress achieved in NFY 2077/78

Expenditure	Weightage	Budget	Weightage Progress	Weightage Progress %	Expenditure	Financial progress %
Capital Budget	44.7	240.0	44.7	100.00	169.8	70.8
Recurrent Budget	55.31	297.1	53.4	96.51	263.5	88.7
Total	100	537.1	98.1	98.1	433.3	80.7

Table 23 Major tools, equipment and their status

S.N.	Particulars	Unit	Quantity	Condition	Remarks
1	Motorcycle	No.	3	1 is Repairable and others 2 are in good condition	
2	Tata sumo Jeep	No.	1	Repairable	
3	Guest room	No.	1	Good	
4	Staff canteen	No.	1	Repairable	
5	Motor garage	No.	1	Repairable	
6	Silo pit	No.	3	2 are Repairable and one is in Good condition	
7	Chaff cutter machine	No.	2	Good	
8	Computer set	No.	7	Good	
9	Power sprayer	No.	1	Good	
10	Metal detector	No.	1	Good	
11	Tractor	No.	2	Good	
12	Generator	No.	2	Good	
13	Milking machine	Set	2	Good	
14	Centrifuge machine	No.	1	Good	

S.N.	Particulars	Unit	Quantity	Condition	Remarks
15	Fax machine	No.	1	Good	
16	Photocopy machine	No.	3	Good	
17	STM phone line	No.	1	Good	
18	Canon Camera	No.	2	Good	
19	Laptop	No.	4	Good	
20	Refrigerator	No.	2	Good	
21	Lacto scan (milk analyzer)	No.	1	Good	
22	LN ₂ container	No.	4	Good	
23	Multimedia projector	No.	1	Good	
24	Binocular microscope	No.	2	Good	
25	Field water pump set	No.	1	Good	
26	Digital beam balance	No.	1	Good	
27	Solar water heater	No.	3	Good	
28	Solar light	Set	2	Good	
29	Hydroponic Machine	Set	1	Good	
30	Four wheel Scorpio Pick-up	No.	1	Good	
31	Cow shed with hay store	No.	1	Good	
32	Staff quarter	No.	2	Good	
33	Cow Shed	No.	3	Good	
34	Hay Store	No.	1	Good	
35	Watchmen quarter	No.	1	Good	
36	Manual hay binder	No.	1	Good	
37	Back fat thickness	No.	1	Good	
38	Pig PD machine	No.	1	Good	
39	Water pump	No.	3	Good	
40	Burdizzo Castrator	No.	2	Good	
41	Gas heater	No.	2	Good	
42	Samsung Mobile J6	No.	1	Good	
43	UPS	No.	4	Good	
44	Power tiller	No.	1	Good	
45	Milking machine	No.	1	Good	

Table 24 Price list of the products and goods in the center

S.N.	Particulars	Unit	NRs	Remarks
1	Cow milk	Liter	55.15	
2	Cattle manure	Trailer	4500.00	
3	Pig manure	Sac of 50 Kg	250.00	
4	Piglets (30-45 days)	No.	3500.00	
5	Piglets (46-60 days)	No.	4000.00	
6	Piglets (61-90 days)	No.	4500.00	
7	Culled pig (Male/Female)	Kg	130.00	Live weight
8	Ryegrass seed	Kg	350.00	
9	Paspalum grass seed	Kg	300.00	
10	Artificial Insemination in cow and buffalo	Per animal	25.00	
11	Feed Sac	Piece	10.00	

Table 25 Share of the revenue collection

S.N.	Revenue Source	NRs	%
1	Milk Sale	7135426	83.7
2	Piglet and live pig sale	887762	10.4
3	Miscellaneous (AI/NI, Sack, manure, grass seeds, live animal (calf) sale, tender document, Insurance etc)	501768.1	5.9
	Total	8524956	100

Table 26 Details of yearly revenue collection (NRs in Lakh)

Particular	NFY							Rem arks	
	2070/71	201/72	2072/73	2073/74	2074/75	2075/76	2076/77		2077/78
Milk sale				19.93	31.24	45.23	56.42	71.35	
Piglet and live pig sale				6.43	6.00	5.08	5.92	8.87	
Others				5.79	6.51	9.83	14.95	5.01	
Total	31.67	35.95	42.66	32.15	43.75	60.14	77.29	85.23	

Table 27 Approved posts and their status in NFY 2077/78

S.N.	Designation	Class	Status			Remark
			Approved	Fulfilled	Vacant	
1	Senior Livestock Development Officer	G II	1	1	0	
2	Livestock Development Officer	G III	1	1	0	
3	Livestock Service Technician	NG I	2	2	0	
4	Assistant Livestock Service Technician	NG II	2	2	0	
5	Assistant accountant	NG II	1	0	1	
6	Driver		1	0	1	
7	Office Assistant		2	2	0	
Total			10	8	2	

Table 28 Description of employees

S. N.	Designation	Name of employee	Date of Joining CGRC	Permanent Address	Remarks
1	Senior Livestock Development Officer	Dr. Gopal Giri	2078/01/06	Pokhara Metropolitan-7, Kaski	
2	Livestock Development Officer	Mr, Gana Jirel	2078/10/15	Jiri Municipality-6, Dolakha	
3	Livestock Service Technician	Mr, Pasang Rinji Sherpa	2076/05/12	Jiri 1, Dolakha	Working in Khimti office
4	Accountant	Mr. Rajan Shivakoti	2076/02/01	Kalinchock , Dolakha	Staff of DTCO, Dolakha
5	Junior Livestock Service Technician	Mrs Dhana Maya Magar	2076/04/22	Siiddicharan municipality -6, Okhaldhunga	
6	Junior Livestock Service Technician	Mr Bal Kumar Dahal	2074/11/03	Kanchanrup municipality-12, Saptari	
7	Office Assistant	Mr Chet Bahadur Shrestha	2061/09/09	Jiri Municipality-6, Dolakha	
8	Office Assistant	Mr Ibaram Jirel	2050/12/30	Jiri Municipality-6, Dolakha	

Table 29 Description of daily wage workers

S.N.	Name of employee	Permanent Address	Responsibility	Remarks
1	Mandhowj Jirel	Jiri 7, Dolakha	Watchman	
2	Indra Bahadur Jirel	Jiri 4, Dolakha	Care and management of pig	
3	Karna Bahadur Jirel	Jiri 4, Dolakha	"	
4	Biresh Jirel	Jiri 6, Dolakha	Care and management of cow	
5	Saidhowj Jirel	Jiri 5, Dolakha	"	
6	Ran Bahadur Jirel	Jiri 7, Dolakha	"	
7	Bina Sherpa	Jiri 7, Dolakha	"	
8	Buddha Sherpa	Jiri 7, Dolakha	"	
9	Purna Bahadur Jirel	Jiri 5, Dolakha	Pasture land	
10	Prem Jirel	Jiri 7, Dolakha	"	
11	Showat Bahadur Karki	Jiri 6, Dolakha	Cattle grazing	
12	Lalita Jirel	Jiri 6, Dolakha	"	
13	Gyan Bahadur Khatri	Gokulganga, VDC, Ramechhap	Breeding office Khimti	
14	Kul Bahadur Basnet	Gokulganga VDC Ramechhap	"	

Annexes

Annex 1: Annual Program NFY 2077/78

वार्षिक विकास कार्यक्रम रा.यो.आ. फा.नं. १

- १ आ.व. : ०७७/०७८
- २ बजेट उपशिर्षक नं. : ३१२०२१०३
- ३ मन्त्रालय : कृषि तथा पशुपन्छी विकास मन्त्रालय
- ४ विभाग/संस्था : पशु सेवा विभाग
- ५ कार्यक्रम/आयोजनाको नाम : पशुपन्छी श्रोत व्यवस्थापन तथा प्रवर्द्धन कार्यक्रम (राष्ट्रिय पशु आहारा तथा लाईभस्टक गुण व्यवस्थापन प्रयोगशाला, हरिहरभवन)
- ६ स्थान : (क) जिल्ला : ३१२०२२०१ गाई अनुवांशीक श्रोत केन्द्र, जिरी
- ७ आयोजना शुरु भएको मिति
- ८ आयोजना पुरा हुने मिति : सालवसाली
- ९ आयोजना/कार्यालय प्रमुखको नाम : डा. गोपाल गिरी

१०. वार्षिक बजेट रु. ५३७.१
- क. आन्तरिक
 - १.नेपाल सरकार रु ५३७.१०
 - नेपाल सरकार आन्तरिक ऋण
 - २.स्थानीय निकाय
 ३. जनसहभागिता
- ख. वैदेशिक अनुदान ऋण
- ग सटही दर :
- घ. दातृ संस्था

LMBIS code	कार्यक्रम क्रियाकलाप	खर्च	इकाई	वार्षिक			प्र चौमासिक			द्वि चौमासिक			तृ चौमासिक			कैफियत
				परिमाण	भार	बजेट	परिमाण	भार	बजेट	परिमाण	भार	बजेट	परिमाण	भार	बजेट	
अ) पूँजीगत खर्च अन्तर्गतका कार्यक्रमहरू																
११.१.२.३७७	अधुरो प्रयोगशाला भवन सफा गर्ने	३१११२	संख्या	१	४.१०	२२.०	१	०.०९	०.५०	१	३.४४	१८.५०	१.००	०.५६	३.००	
११.१.२.३७८	गाईको गोठ निर्माण गर्ने	३१११२	संख्या	१	१४.८९	८०.०	१			१	५.५९	३०.००	१.००	९.३१	५०.००	
११.१.२.४०१	बंगुरको खोर निर्माण	३१११२	संख्या	१	१४.८९	८०.०	१	०.३७	२.००		७.२६	३९.००		७.२६	३९.००	
११.१.२.४०२	खिम्तिको अधुरो गोठ सम्पन्न गर्ने	३१११२	संख्या	१	३.७२	२०.०		०.९३	५.००	१	२.७९	१५.००				
११.३.७.९२९	पावर टिलर खरिद	३११२२	पटक	१	०.४७	२.५		०.४७	२.५०	१						
११.३.७.९३०	मिल्किंग मेशिन खरिद जडान तथा संचालन	३११२२	पटक	१	०.९३	५.०				१	०.९३	५.००				
११.४.१६.२३	भण्डार गोठमा गाईको लागि स्वच्छ पानीको आपूर्ति	३११५६	पटक	१	०.९३	५.०					०.९३	५.००				
११.४.२२.३०७	डिस्पेन्सरी टहरा (ट्रिभिज सहित) निर्माण	३११५९	पटक	१	१.८६	१०.०	१	०.०९	०.५०		१.७७	९.५०				
११.५.२२.३२७	जिरीको पुरानो तारबार (फेन्सींग) को मर्मत संभार	३११७१	पटक	२	०.४७	२.५				१	०.२३	१.२५		०.२३	१.२५	
११.५.२२.३२८	चरन तथा घाँसेवाली प्लटहरूको पुरानो ड्रेनेजहरूको सरसफाई तथा मर्मत	३११७१	पटक	१	०.५६	३.०					०.२८	१.५०		०.२८	१.५०	
११.६.१.१६	गाईगोठको बालको तल्लो भाग कोरामसिनो गर्ने डुड तथा गटर मर्मत	३११३१	पटक	१	१.६८	९.०		०.०९	०.५०		१.५८	८.५०				
११.६.१३.९६	कार्यालय तथा प्रयोगशालाको लागि विभिन्न फर्निचरहरू	३११२३	पटक	१	०.१९	१.०		०.१९	१.००							
क) पूँजीगत खर्च कार्यक्रमको जम्मा:					४४.६८	२४०.०		२.२३	१२.००		२४.८१	१३३.२५		१७.६४	९४.७५	
१.१.१.४	रा.प.द्वितीय (प्रा.)(स्थायी कर्मचारी)	२११११	जना	१	१.३९	७.५	१	०.५३	२.८७	३	०.४३	२.२९	१.००	०.४३	२.२९	
१.१.१.५	रा.प.तृतीय (प्रा.)(स्थायी कर्मचारी)	२११११	जना	१	१.२४	६.६	१	०.४८	२.५६	१	०.३८	२.०४	१.००	०.३८	२.०४	
१.१.१.६	रा.प.अनं.प्रथम (प्रा.)(स्थायी कर्मचारी)	२११११	जना	२	१.९४	१०.४	२	०.७५	४.०१	२	०.६०	३.२०	२.००	०.६०	३.२०	
१.१.१.७	रा.अनं.द्वितीय (प्रा.)(स्थायी कर्मचारी)	२११११	जना	१	०.८४	४.५	१	०.३२	१.७४	१	०.२६	१.३९	१.००	०.२६	१.४०	

LMBIS code	कार्यक्रम क्रियाकलाप	खर्च	इकाई	वार्षिक			प्र चोमासिक			द्वि चोमासिक			तृ चोमासिक			कैफियत
				परिमाण	भार	बजेट	परिमाण	भार	बजेट	परिमाण	भार	बजेट	परिमाण	भार	बजेट	
१.१.१.२५	हलुकासवारी चालक करार पांचास्तर (स्थायी कर्मचारी)	२११११	जना	१	०.००	०.०	०									
१.१.१.२०	का.स. पाँचौं श्रेणी(स्थायी कर्मचारी)	२११११	जना	२	१.६४	८.८	२	०.६३	३.३९	२	०.५०	२.७१	२.००	०.५०	२.७०	
१.१.१.२३	रा.प.अनं.द्वितीय (प्रा.)(स्थायी कर्मचारी)	२११११	जना	२	१.७४	९.३	२	०.६७	३.५९	२	०.५३	२.८७	२.००	०.५३	२.८६	
१.२.१.१२	स्थानीय भत्ता	२११३१	संख्या	१०	०.२४	१.३	१०	०.०८	०.४३	१०	०.०८	०.४३	१०.००	०.०८	०.४४	
१.२.२.१	महंगी भत्ता	२११३२	संख्या	१०	०.४५	२.४	१०	०.१५	०.८०	१०	०.१५	०.८०	१०.००	०.१५	०.८०	
१.२.८.६	पशुहरुको लिलामी व्यवस्थापन सहित	२११३९	संख्या	३	०.०८	०.५	१	०.०३	०.१५	१	०.०३	०.१५		०.०३	०.१५	
१.२.९.७	बैटक पालो पहरा आदी अन्य भत्ता	२११३९	पटक	६	०.०९	०.५	२	०.०४	०.२४	२	०.०३	०.१६	२.००	०.०२	०.१०	
१.३.१.३	पोशाक भत्ता	२११२१	संख्या	१०	०.१७	०.९							१०.००	०.१७	०.९०	
१.६.४.१	कर्मचारीको योगदानमा आधारित विमा कोष	२१२१३	जना	१०	०.०९	०.५		०.०३	०.१६		०.०३	०.१६		०.०३	०.१६	
२.१.२.३	कार्यालय	२११३२	महिना	१२	०.४८	२.६	४	०.१६	०.८७	४	०.१६	०.८७	४.००	०.१६	०.८६	
२.१.२.६	मेशिन तथा अन्य उपकरण संचालन	२११३२	महिना	१२	०.४५	२.४	४	०.१५	०.८०	४	०.१५	०.८०	४.००	०.१५	०.८०	
२.१.३.५	पिउने पानी	२११३२	महिना	१२	०.०३	०.२	४	०.०१	०.०६	४	०.०१	०.०६	४.००	०.०१	०.०६	
२.१.६.१	टेलिफोन महसुल (टेलिफोन महसुल)	२२११२	महिना	१२	०.०९	०.५	४	०.०३	०.१६	४	०.०३	०.१६	४.००	०.०३	०.१६	
२.१.६.८	इन्टरनेट महसुल (टेलिफोन महसुल)	२२११२	महिना	१२	०.०९	०.५	४	०.०३	०.१७	४	०.०३	०.१७	४.००	०.०३	०.१७	
२.१.९.१	हलाक तथा कुरियर सेवा (छपाई खर्च)	२२११२	महिना	१२	०.०४	०.२	४	०.०१	०.०८	४	०.०१	०.०८	४.००	०.०१	०.०८	
२.१.१०.२	इन्टरनेट जडान तथा संचालन	२२११२	पटक	१	०.११	०.६	१	०.११	०.६०							
२.२.२.५	अनुगमनमा प्रयोग हुने गाडीको	२२२१२	लीटर	१२००	०.४५	२.४	४००	०.१५	०.८०	४००	०.१५	०.८०	४००.००	०.१५	०.८०	
२.२.२.११	मोटरसाईकलको लागि पेट्रोल (कार्यालयको इन्धन)	२२२१२	लीटर	४८०	०.०९	०.५	१६०	०.०३	०.१७	१६०	०.०३	०.१७	१६०.००	०.०३	०.१६	
२.२.२.४२	गाडीको लागि इन्धन	२२२१२	लीटर	४८०	०.०९	०.५		०.०३	०.१६		०.०३	०.१६		०.०३	०.१६	
२.२.२.४२.३	पिकअपको लागि इन्धन	२२२१२	लीटर	४८०	०.०९	०.५		०.०३	०.१६		०.०३	०.१६		०.०३	०.१६	
२.२.२.१५५	अन्य गियर आयल ब्रेक आयल आदि(कार्यालयको इन्धन)	२२२१२	लीटर	८१	०.१४	०.८	२७	०.०५	०.२५	२७	०.०५	०.२६	२७.००	०.०५	०.२५	
२.२.३.२	गर्बोस	२२३१४	संख्या	३६	०.१०	०.५	१२	०.०३	०.१८	१२	०.०३	०.१८	१२.००	०.०३	०.१८	
२.२.३.८	जेनेरेटरको लागि डिजल	२२३१४	लीटर	१०००	०.१९	१.०		०.०७	०.३५		०.०७	०.३५		०.०६	०.३०	
२.३.१.३	हुड पात्रे	२२२१३	बटा	४	०.०७	०.४	४	०.०२	०.१०	४	०.०४	०.२०	४.००	०.०२	०.१०	
२.३.१.११	चार पात्रे	२२२१३	बटा	३	०.७४	४.०		०.१९	१.००		०.३७	२.००		०.१९	१.००	
२.३.२.१५४	हाईड्रोपोनिक्स ड्र्याक्टर तथा अन्य मेशीनरी औजार	२२२२१	पटक	४	०.२३	१.२	१	०.०६	०.३१		०.१२	०.६२		०.०६	०.३१	
२.३.९.१४८	केन्द्रका गोठ / खोर तथा भौतिक संरचना मर्मत	२२२३१	संख्या	३	१.१२	६.०	१	०.३७	२.००	१	०.३७	२.००	१.००	०.३७	२.००	
२.४.१.३७	कार्यालय संचालनको लागि स्टेशनरी तथा मसलन्द सामान	२२३११	पटक	१२	०.३४	१.८	४	०.११	०.६०	४	०.११	०.६०	४.००	०.११	०.६०	
२.४.१.२.६१	वार्षिक प्रगति पुस्तिका प्रकाशन	२२३१५	संख्या	१००	०.०९	०.५				१००	०.०९	०.५०				
२.४.१.४.२	पत्रपत्रिका रेडीयोमा विज्ञापन तथा सूचना प्रकाशन	२२३१५	पटक	६	०.०९	०.५	२	०.०३	०.१७	२	०.०३	०.१७	२.००	०.०३	०.१६	
२.५.३.३४०	सुरक्षा गाई	२२४११	महिना	२४	०.९८	५.३	८	०.३७	२.००	८	०.३७	२.००	८.००	०.२४	१.२८	
२.५.४.१३	वेबसाइट नविकरण तथा अपडेट	२२४१२	पटक	१	०.०६	०.३	१	०.०६	०.३०							
२.५.७.५	सेवा करारका कर्मचारी लाइ पोशाक	२२४१३	संख्या	१	०.०२	०.१		०.००						०.०२	०.१०	
२.५.७.९.२	हलुका सवारी चालक करार	२२४१३	महिना	१३	०.५३	२.९	५	०.२०	१.१०	४	०.१६	०.८८	४.००	०.१६	०.८८	
२.७.१.१८	ट्र्याक्टरको लागि इन्धन	२२५२१	लीटर	२०००	०.३७	२.०	७००	०.१३	०.७०	६००	०.११	०.६०	७००.००	०.१३	०.७०	

LMBIS code	कार्यक्रम क्रियाकलाप	खर्च	इकाई	वार्षिक			प्र चौमासिक			द्वि चौमासिक			तृ चौमासिक			कैफियत
				परिमाण	भार	बजेट	परिमाण	भार	बजेट	परिमाण	भार	बजेट	परिमाण	भार	बजेट	
२.७.१.२७८	आधारभूत प्रयोगशाला (रिएजेंट केमिकल तथा अन्य सामग्री खरीद संचालन तथा व्यवस्थापन सहित) तयारि सामान खरीद खर्च	२२५२१	पटक	२	०.२८	१.५	१	०.१४	०.७५				१.००	०.१४	०.७५	
२.७.१.८.५१७	कृषि गार्मिथान सेवा संचालन (नाइट्रोजन खरीद दुबानि तथा आन्तरिक भ्रमण सहित)	२२५२२	पटक	१२	०.३४	१.८	४	०.११	०.६०	४	०.११	०.६०	४.००	०.११	०.६०	
२.७.१.८.८४५	टनेल सहितको घाँसहरूको नर्सरी स्थापना तथा व्यवस्थापन		पटक	२	०.५८	३.१				२	०.२९	१.५५	१.००	०.२९	१.५५	
२.८.१.२०६	वाह्य श्रोत कार्यक्रम तथा खिम्ती फार्मका लागि अनुगमन भ्रमण	२२६११	महिना	१२	०.६७	३.६	४	०.२२	१.२०	४	०.२२	१.२०	४.००	०.२२	१.२०	
२.८.२.९४	गोष्ठी तालिम समिनामा भाग लिने (सर्वा भएर जाने समेत)	२२६१२	पटक	६	०.२२	१.२	२	०.०७	०.४०	२	०.०७	०.४०	२.००	०.०७	०.४०	
२.८.२.२२०	कार्यालय प्रमुखहरूको बैठकमा सहभागी हुन तथा तलव भत्ता निकासको लागि सदरमुकाम चरीकोट जाने आउने	२२६१२	पटक	१८	०.२८	१.५	६	०.०९	०.५०	६	०.०९	०.५०	६.००	०.०९	०.५०	
२.९.१.१०	सवारी साधन तथा पशुपंजी	२२२१४	पटक	३	०.३७	२.०	१	०.१९	१.००	१	०.०९	०.५०	१.००	०.०९	०.५०	
२.९.६.९	कार्यक्रम व्यवस्थापन कार्यालयको लागि विविध खर्च	२२७११	महिना	१२	०.२८	१.५		०.०९	०.५०		०.०९	०.५०		०.०९	०.५०	
२.७.१.२१९	जर्सी न्यूक्लियर्स हर्ड व्यवस्थापन	२२५२१	संख्या	१००	१३.०३	७०.०		३.७२	२०.००		५.५९	३०.००		३.७२	२०.००	
२.७.१.२२०	वाच्छावाच्छी उत्पादन	२२५२१	संख्या	२५	१.६८	९.०		०.५६	३.००		०.५६	३.००		०.५६	३.००	
२.७.१.२२१	साडे बहर पालन	२२५२१	संख्या	३०	१.१२	६.०		०.३७	२.००		०.१९	१.००		०.५६	३.००	
२.७.१.२२२	सेक्सड सिमेनबाट जन्मेका गाईहरूको व्यवस्थापन	२२५२१	संख्या	२३	२.७९	१५.०		०.९३	५.००		०.९३	५.००		०.९३	५.००	
२.७.१.२२४	खिमि गाइ प्रजनन् केन्द्रमा रागी साडे पालन तथा व्यवस्थापन	२२५२१	संख्या	३	०.२८	१.५		०.०९	०.५०		०.०९	०.५०		०.०९	०.५०	
२.७.१.४६३	जिरी फार्ममा बहुबर्षे तथा डालेघास विस्तार (पशु उत्पादन)	२२५२१	हे.	१	०.११	०.६								०.११	०.६०	
२.७.१.४६४	खिमिमा फार्ममा बहुबर्षे तथा डालेघास विस्तार (पशु उत्पादन)	२२५२१	हे.	१	०.११	०.६								०.११	०.६०	
२.७.१.४६५	हे उत्पादन (जिरी) (अन्य)	२२५२१	मे.टन	२००	०.८८	४.८		०.८८	४.७५							
२.७.१.४६६	हे उत्पादन (खिमि) (अन्य)	२२५२१	मे.टन	३०	०.१९	१.०		०.१९	१.००							
२.७.१.४६७	साइलेज वनाउने(जिरीमा)	२२५२१	मे.टन	२५०	०.५६	३.०		०.५६	३.००							
२.७.१.४६८	खिमिमा साइलेज वनाउने(अन्य)	२२५२१	मे.टन	७५	०.२३	१.३		०.२३	१.२५							
२.७.३.२८५	हरियो घाँस उत्पादन (जै/भेच ५ हेक्टर जै/भेच ५ हेक्टर जिरी)(अन्य)	२२५२१	हे.	५	०.५६	३.०		०.२८	१.५०					०.२८	१.५०	
२.७.३.२८६	हरियो घाँस उत्पादन (जै १ भेच १ हे मकै। काउपी १ हेक्टर, खिमिमा सिचाइ र फेन्सिंग सहित) खिमि	२२५२१	पटक	२	०.१९	१.०		०.०९	०.५०					०.०९	०.५०	
२.७.१.८.१९४	खिमिमा गाईभैसी प्रजनन् केन्द्र (कृ.ग., इन्सीमिनेटर सहित) संचालन	२२५२२	पटक	३	०.५६	३.०		०.१९	१.००		०.१९	१.००		०.१९	१.००	
२.७.१.८.२०९	सुख्खा मौसममा आहारा व्यवस्थापनको लागि हाइड्रोफोनिक्स संचालन (विउ, ज्यामी, केमिकल लगायत अन्य सामग्री खरिद (पशुउत्पादन)	२२५२२	महिना	७	१.९५	१०.५	१	०.२८	१.५०	४	१.१२	६.००	२.००	०.५६	३.००	
२.७.१.८.२१०	राई घासको विउ उत्पादन (पशु उत्पादन)	२२५२२	के.जी.	४०	०.०९	०.५		०.०९	०.५०							
२.७.१.८.२११	पास्पलम घासको विउ उत्पादन(पशु उत्पादन)	२२५२२	के.जी.	१५०	०.१८	१.०					०.१८	०.९९				
२.७.१.८.८२२	खिमिमा घाँसबाली वीड उत्पादनको लागि प्लट विस्तार तथा व्यवस्थापन (फेन्सींग सहित)	२२५२२	हे.	१	०.९३	५.०				१	०.९३	५.००				

LMBIS code	कार्यक्रम क्रियाकलाप	खर्च	इकाई	वार्षिक			प्र चौमासिक			द्वि चौमासिक			तृ चौमासिक			कैफियत	
				परिमाण	भार	बजेट	परिमाण	भार	बजेट	परिमाण	भार	बजेट	परिमाण	भार	बजेट		
२.७.१.८.८२३	जिरीमा घाँसेवाली वीउ उत्पादनको लागि प्लट विस्तार तथा व्यवस्थापन (फर्न्सींग सहित)	२२५२२	ह.	१	०.९३	५.०				१	०.९३	५.००					
७.२.९.२४	गाईहरुको ड्रिन्चिङ्ग, म्याक्सिनेशन र औषधि उपचार सेवा	२७२१३	पटक	३	०.५६	३.०		०.१९	१.००		०.१९	१.००		०.१९	१.००		
२.७.१.२२७	बंगुरको न्युक्लियस हर्ड/माउ पालन	२२५२१	संख्या	२०	२.७९	१५.०		२०	०.९३	५.००	२०	०.९३	५.००	२०.००	०.९३	५.००	
२.७.१.२२८	रिप्लेसमेन्ट बंगुर पालन	२२५२१	संख्या	८	०.६३	३.४		४	०.०९	०.५०	८	०.२७	१.४५	८.००	०.२७	१.४५	
२.७.२.२५३	पाटापाठी उत्पादन	२२५२१	संख्या	२३०	१.८४	९.९			०.६१	३.३०		०.६१	३.३०		०.६१	३.३०	
२.७.३.२८७	रिप्लेसमेन्ट बंगुर खरिद, दुबानि सहित)	२२५२१	संख्या	८	०.१९	१.०		४	०.०९	०.५०	४	०.०९	०.५०				
७.२.९.२५	बंगुरहरुको ड्रिन्चिङ्ग, म्याक्सिनेशन, औषधि उपचार सेवा	२७२१३	पटक	३	०.१९	१.०			०.०६	०.३४		०.०६	०.३३		०.०६	०.३३	
२.६.४.२३८	गाईपालन व्यवस्थापन तालिम (३ दिने)	२२५१२	पटक	३	०.५०	२.७			०.१७	०.९०		०.१७	०.९०		०.१७	०.९०	
२.६.४.२३९	बंगुर पालन तालिम (३ दिने)	२२५१२	पटक	१	०.१९	१.०									०.१९	१.००	
२.७.५.२७०	बाह्य कार्यक्रम (खावा १, रामधुनी १) को सञ्चालन / फलोअप(प्रचार प्रसार तथा सामाग्री उत्पादन तथा प्रकाशन र वितरण)	२२५२२	पटक	६	०.२२	१.२			०.०७	०.४०		०.०७	०.४०		०.०७	०.४०	
२.७.१.८.४८१	स्थानीय त्रिडर समुहसंगको समन्वयमा बाह्य कार्यक्रम (खावा र रामधुनी) मा रहेका बंगुरहरुको प्राविधिक मारामिटरहरु संग सम्बन्धित तथ्यांक संकलन, विक्षेपण, व्यवस्थापन तथा प्रतिवेदन तयारी	२२५२२	संख्या	३	०.१५	०.८			०.०५	०.२५		०.०६	०.३१		०.०५	०.२५	
२.७.१.८.८६०	गाई त्रिडर समुहहरु (५ वटा) को सञ्चालन र फलोअप (घाँसेको वीउ, औषधि, आदि)	२२५२२	संख्या	१५	०.८४	४.५			०.२८	१.५०		०.२८	१.५०		०.२८	१.५०	
२.७.१.८.८६१	स्वच्छ दुध उत्पादनका लागि गाईका बाह्य कार्यक्रममा रहेका त्रिडर समुहहरुमा स्टीलका बाल्टिन वितरण	२२५२२	संख्या	७५	०.२८	१.५					७५	०.२८	१.५०				
२.७.१.८.८६२	स्थानीय त्रिडर समुहसंगको समन्वयमा गाई कार्यक्रमहरुमा रहेका गाइहरुको प्राविधिक पारामिटरसंग सम्बन्धित तथ्यांक संकलन विप्लेशन व्यवस्थापन तथा प्रतिवेदन तयारी	२२५२२	संख्या	३	०.११	०.६			०.०४	०.२०		०.०४	०.२०		०.०४	०.२०	
२.७.१.८.८६४	केन्द्र बरिपरीका कृषकहरु समेटेर गाईको त्रिडर समुह गठन तथा परिचालन	२२५२२	संख्या	१	०.१५	०.८			०.०५	०.२५					०.१०	०.५५	
२.७.१.८.२६३	फार्म दिवश(पशु उत्पादन)	२२५२२	पटक	१	०.१२	०.७								१.००	०.१२	०.६५	
२.७.१.८.२६७	प्रविधि प्रसार सम्बन्धि डिस्पले बोर्डहरु (फलेक्स प्रिन्ट तथा अन्य प्रसारण सामाग्री)	२२५२२	पटक	२	०.१५	०.८			०.०७	०.४०					०.०७	०.४०	
ख)	चातु खर्च कार्यक्रमको जम्मा:				५५.३२	२९७.१			१८.२५	९८.०२		२०.३२	१०९.१२		१६.७४	८९.९२	
	कुल जम्मा				१००	५३७.१			११०.०२			२४२.३७			१८४.६७		

तयार गर्नको नाम पद र दस्तखत:

आयोजना/कार्यालय प्रमुखको दस्तखत

प्रमाणित गर्नेको नाम पद र दस्तखत

Annex 2: Annual Progress NFY 2077/78

गाई आनुवंशिक स्रोत केन्द्र जिरी
आर्थिक वर्ष २०७७/७८ को वार्षिक प्रगति विवरणा

बजेट रु लाखमा

LMBIS cod	कार्यक्रम क्रियाकलाप	खर्च शीर्षक	इकाई	वार्षिक			वार्षिक प्रगति			वार्षिक खर्च		कैफियत
				परिमाण	भार	बजेट	प्रगती	भारतीय प्रगति	भा.प्र. प्रतिशत	खर्च रकम रु	वित्तिय प्रगति	
	अ) पूँजीगत खर्च अन्तर्गतका कार्यक्रमहरू											
११.१.२.३७७	अधुरो प्रयोगशाला भवन सम्पन्न गर्ने	३१११२	संख्या	१	४.१०	२२.०	१	४.१०	१००.००	१४.७६		
११.१.२.३७८	गाईको गोठ निर्माण गर्ने	३१११२	संख्या	१	१४.९०	८०	१	१४.९०	१००.००	५२.०५		
११.१.२.४०१	बंगुरको खोर निर्माण	३१११२	संख्या	१	१४.९०	८०.०	१	१४.९०	१००.००	६२.७६		
११.१.२.४०२	खिमिको अधुरो गोठ सम्पन्न गर्ने	३१११२	संख्या	१	३.७२	२०.०	१	३.७२	१००.००	८.५२		
११.३.७.९२९	पावर टिलर खरिद	३११२२	पटक	१	०.४७	२.५	१	०.४७	१००.००	२.५०		
११.३.७.९३०	मिल्किंग मेशिन खरिद जडान तथा संचालन	३११२२	पटक	१	०.९३	५.०	१	०.९३	१००.००	५.००		
११.४.१६.२३	भण्डार गोठमा गाईको लागि स्वच्छ पानीको आपूर्ति	३११५६	पटक	१	०.९३	५.०	१	०.९३	१००.००	४.९०		
११.४.२२.३०७	डिस्पेन्सरी टहरा (ट्रिभिज सहित) निर्माण	३११५९	पटक	१	१.८६	१०.०	१	१.८६	१००.००	३.८४		
११.५.२२.३२७	जिरीको पुरानो तारवार (फेन्सीग) को मर्मत संभार	३११७१	पटक	२	०.४७	२.५	२	०.४७	१००.००	२.४८		
११.५.२२.३२८	चरन तथा घाँसेवाली प्लटहरूको पुरानो ड्रेनेजहरूको सरसफाई तथा मर्मत	३११७१	पटक	१	०.५६	३.०	१	०.५६	१००.००	३.००		
११.६.१.१६	गाईगोठको बालको तल्लो भाग कोरामसिनो गर्ने डुड तथा गटर मर्मत	३११३१	पटक	१	१.६८	९.०	१	१.६८	१००.००	९.००		
११.६.१.३.९६	कार्यालय तथा प्रयोगशालाको लागि विभिन्न फर्निचरहरू	३११२३	पटक	१	०.१९	१.०	१	०.१९	१००.००	१.००		
	क) पूँजीगत खर्च कार्यक्रमको जम्मा:				४४.६९	२४०.००		४४.६९		१६९.८१	७०.७५	
	आ) चालु खर्च अन्तर्गतका कार्यक्रमहरू											
१.१.१.४	रा.प.द्वितीय (प्रा.)(स्थायी कर्मचारी)	२११११	जना	१	१.३९	७.४५	१	१.३९	१००.००	३.९५		
१.१.१.५	रा.प.तृतीय (प्रा.)(स्थायी कर्मचारी)	२११११	जना	१	१.२४	६.६४	१	१.२४	१००.००	६.६४		
१.१.१.६	रा.प.अनं.प्रथम (प्रा.)(स्थायी कर्मचारी)	२११११	जना	२	१.९४	१०.४१	२	१.९४	१००.००	८.१८		
१.१.१.७	रा.अनं.द्वितीय (प्रा.)(स्थायी कर्मचारी)	२११११	जना	१	०.८४	४.५३	०	०.००	०.००	४.४५		
१.१.१.२५	हलुकासवारी चालक करार पाँचौंस्तर (स्थायी कर्मचारी)	२११११	जना	१								
१.१.१.३०	का.स. पाँचौं श्रेणी(स्थायी कर्मचारी)	२११११	जना	२	१.६४	८.८०	२	१.६४	१००.००	८.५५		
१.१.१.९३	रा.प.अनं.द्वितीय (प्रा.)(स्थायी कर्मचारी)	२११११	जना	२	१.७४	९.३२	२	१.७४	१००.००	३.९५		
१.२.१.१२	स्थानीय भत्ता(स्थानीय भत्ता)	२११३१	संख्या	१०	०.२४	१.३०	१०	०.२४	१००.००	०.७८		

LMBIS cod	कार्यक्रम क्रियाकलाप	खर्च शीर्षक	इकाई	वार्षिक			वार्षिक प्रगति			वार्षिक खर्च		कैफियत
				परिमाण	भार	बजेट	प्रगती	भारतीय प्रगति	भा.प्र. प्रतिशत	खर्च रकम रु	वित्तिय प्रगति	
१.२.२.१	महंगी भत्ता(महंगी भत्ता)	२११३२	संख्या	१०	०.४५	२.४०	१०	०.४५	१००.००	१.७०		
१.२.२.६	अन्य भत्ता (पशुहरुको लिलामी व्यवस्थापन सहित)	२११३९	संख्या	३	०.०८	०.४५	३	०.०८	१००.००	०.३०		
१.२.९.७	बैठक पालो पहरा आदी अन्य भत्ता (अतिरिक्त भत्ता)	२११३९	पटक	६	०.०९	०.५०	६	०.०९	१००.००	०.३९		
१.३.१.३	स्थायी कर्मचारीहरुको पोशाक भत्ता (पदाधिकारी एवं निजामति कर्मचारी)	२११२१	संख्या	१०	०.१७	०.९०	१०	०.१७	१००.००	०.६०		
१.६.४.१	कर्मचारीको योगदानमा आधारित विमा कोष खर्च	२१२१३	जना	१०	०.०९	०.४८	१०	०.०९	१००.००	०.३४		
२.१.२.३	बिजुली महसुल (बिजुली महसुल)	२२१११	महिना	१२	०.४८	२.६०	१२	०.४८	१००.००	२.६०		
२.१.२.६	मेशिन तथा अन्य उपकरण संचालन(बिजुली महसुल)	२२१११	महिना	१२	०.४५	२.४०	१२	०.४५	१००.००	२.४०		
२.१.३.५	पानी महसुल(पिउने पानी)	२२१११	महिना	१२	०.०३	०.१८	१२	०.०३	१००.००	०.१८		
२.१.६.१	टेलिफोन महसुल(टेलिफोन महसुल)	२२११२	महिना	१२	०.०९	०.४८	१२	०.०९	१००.००	०.४८		
२.१.६.८	इन्टरनेट महसुल (टेलिफोन महसुल)	२२११२	महिना	१२	०.०९	०.५१	१२	०.०९	१००.००	०.५०		
२.१.९.१	हुलाक तथा करियर सेवा(छपाई खर्च)	२२११२	महिना	१२	०.०४	०.२४	१२	०.०४	१००.००	०.०२		
२.१.१०.२	इन्टरनेट जडान तथा संचालन	२२११२	पटक	१	०.११	०.६०	१	०.११	१००.००	०.६०		
२.२.२.५	अनुगमनमा प्रयोग हुने गाडीको इन्धन	२२२१२	लीटर	२४००	०.४५	२.४०	२४००	०.४५	१००.००	२.४०		
२.२.२.११	मोटरसाईकलको लागि पेट्रोल (कार्यालयको इन्धन)	२२२१२	लीटर	४८०	०.०९	०.५०	४८०	०.०९	१००.००	०.५०		
२.२.२.४२	गाडीको लागि इन्धन	२२२१२	लीटर	४८०	०.०९	०.४८	४८०	०.०९	१००.००	०.४८		
२.२.२.४२.३	पिकअपको लागि इन्धन	२२२१२	लीटर	४८०	०.०९	०.४८	४८०	०.०९	१००.००	०.४८		
२.२.२.१५५	अन्य गियर आयल ब्रेक आयल आदि(कार्यालयको इन्धन)	२२२१२	लीटर	८१	०.१४	०.७६	८१	०.१४	१००.००	०.७६		
२.२.३.२	रयाँस (इन्धन- अन्य प्रयोजन)	२२३१४	संख्या	३६	०.१०	०.५४	३६	०.१०	१००.००	०.५४		
२.२.३.८	जेनेरेटरको लागि डिजल	२२३१४	लीटर	१०००	०.१९	१.००	१०००	०.१९	१००.००	०.१०		
२.३.१.३	दुइ पाग्रे सवारी साधन मर्मत(सवारी साधन मर्मत)	२२२१३	वटा	४	०.०७	०.४०	४	०.०७	१००.००	०.४०		
२.३.१.११	चार पाग्रे सवारी साधन मर्मत(सवारी साधन मर्मत)	२२२१३	वटा	३	०.७४	४.००	३	०.७४	१००.००	३.८८		
२.३.२.१५४	हाईड्रोपानिक्स ड्र्याक्टर तथा अन्य मेसिनरी औजार मरमत सम्भार	२२२२१	पटक	४	०.२३	१.२४	४	०.२३	१००.००	१.२४		
२.३.९.१४८	केन्द्रका गोठ / खोर तथा भौतिक संचरचना मर्मत (अन्य मर्मत)	२२२३१	संख्या	३	१.१२	६.००	३	१.१२	१००.००	०.६०		
२.४.१.३७	कार्यालय संचालनको लागि स्टेशनरी तथा मसलन्द सामान खर्च	२२३११	पटक	१२	०.३४	१.८०	१२	०.३४	१००.००	१.८०		
२.४.१२.६१	वार्षिक प्रगति पुस्तिका प्रकाशन	२२५२२	संख्या	45	०.०९	०.५०	१	०.०९	१००.००	०.५०		

LMBIS cod	कार्यक्रम क्रियाकलाप	खर्च शीर्षक	इकाई	वार्षिक			वार्षिक प्रगति			वार्षिक खर्च		कैफियत
				परिमाण	भार	बजेट	प्रगती	भारतीय प्रगति	भा.प्र. प्रतिशत	खर्च रकम रु	वित्तीय प्रगति	
२.४.१४.२	पत्रपत्रिका रेडीयोमा विज्ञापन तथा सुचना प्रकाशन	२२३१५	पटक	६	०.०९	०.५०	६	०.०९	१००.००	०.५०		
२.५.३.३४०	सुरक्षा गार्ड / पाले (व्यक्ति करार)	२२४१३	महिना	२४	०.९८	५.२८	२४	०.९८	१००.००	५.१४		
२.५.४.१३	केन्द्रको वेबसाइट नविकरण तथा अपडेट(पशु उत्पादन)	२२४१२	पटक	१	०.०६	०.३०	१	०.०६	१००.००	०.३०		
२.५.७.५	सेवा करारका कर्मचारी लाइ पोशाक	२२४१३	संख्या	१	०.०२	०.१०	१	०.०२	१००.००	०.००		
२.५.७.९२	हलुकासवारी चालक करार(व्यक्ति करार)	२२४१३	महिना	१३	०.५३	२.८६	१३	०.५३	१००.००	०.००		
२.७.१.१८	ट्रयाक्टरको लागि इन्धन	२२२१२	लीटर	२०००	०.३७	२.००	२०००	०.३७	१००.००	२.००		
२.७.१.२७८	आधारभूत प्रयोगशाला (रिएजेन्ट केमिकल तथा अन्य सामग्री खरीद संचालन तथा व्यवस्थापन सहित) तयारि सामान खरीद खर्च	२२५२१	पटक	२	०.२८	१.५०	२	०.२८	१००.००	१.५०		
२.७.१.८.५१७	कृत्रिम गर्भाधान सेवा संचालन (नाइट्रोजन खरीद ढुवानि तथा आन्तरिक भ्रमण सहित)	२२५२२	पटक	१२	०.३४	१.८०	१२	०.३४	१००.००	०.६३		
२.७.१.८.८४५	टनेल सहितको घाँसहरुको नर्सरी स्थापना तथा व्यवस्थापन	२२५२२	पटक	२	०.५८	३.१०	२	०.५८	१००.००	३.१०		
२.८.१.२०६	बाह्य श्रोत कार्यक्रम तथा खिम्ती फार्मका लागि अनुगमन भ्रमण (अनुगमन मुल्यांकन तथा कार्यक्रम कार्यान्वयन भ्रमण खर्च)	२२६११	महिना	१२	०.६७	३.६०	१२	०.६७	१००.००	३.४१		
२.८.२.९४	गोष्ठी तालिम समिक्षामा भाग लिने (सरुवा भएर जाने समेत आन्तरिक भ्रमण खर्च	२२६१२	पटक	६	०.२२	१.२०	६	०.२२	१००.००	०.९८		
२.८.२.२२०	कार्यालय प्रमुखहरुको बैठकमा सहभागी हुन तथा तलवभत्ता निकासको लागि सदरमुकाम चरीकोट जाने आउने	२२६१२	पटक	१८	०.२८	१.५०	१८	०.२८	१००.००	१.१७		
२.९.१.१०	सवारी साधन तथा पशुपंक्षी विमा (बीमा सवारी साधन)	२२२१४	पटक	३	०.३७	१.९८	३	०.३७	१००.००	१.५९		
२.९.६.९	कार्यक्रम व्यवस्थापन कार्यालयको लागि विविध खर्च (अन्य विविध खर्च)	२२७११	महिना	१२	०.२८	१.५०	१२	०.२८	१००.००	१.५०		
१	गाईको न्युक्लीयस हर्डस व्यवस्थापन तथा प्रवर्द्धन कार्यक्रम									०.००		
२.७.१.२१९	जर्सी न्युकिलियस हर्ड व्यवस्थापन (दाना, ज्यामी, अन्य उत्पादन सामग्री सहित)	२२५२१	संख्या	१००	१३.०३	७०.००	१००	१३.०३	१००.००	७०.००		

LMBIS coc	कार्यक्रम क्रियाकलाप	खर्च शीर्षक	इकाई	वार्षिक			वार्षिक प्रगति			वार्षिक खर्च		कैफियत
				परिमाण	भार	बजेट	प्रगती	भारतीय प्रगति	भा.प्र. प्रतिशत	खर्च रकम रु	वित्तिय प्रगति	
२.७.१.२२०	वाच्छावाच्छी उत्पादन (दाना, ज्यामी, अन्य उत्पादन सामग्री सहित)	२२५२१	संख्या	२५	१.६८	९.००	४८	१.६८	१००.००	९.००		
२.७.१.२२१	साडे बहर पालन (दाना, ज्यामी, अन्य उत्पादन सामग्री सहित)	२२५२१	संख्या	३०	१.१२	६.००	३०	१.१२	१००.००	६.००		
२.७.१.२२२	सेक्सड सिमेनबाट जन्मेका गाईहरुको व्यवस्थापन (दाना, ज्यामी, अन्य उत्पादन सामग्री सहित)	२२५२१	संख्या	२३	२.७९	१५.००	२३	२.७९	१००.००	१५.००		
२.७.१.२२४	खिमि गाइ प्रजनन केन्द्रमा रागो साडे पालन तथा व्यवस्थापन (पशु उत्पादन)	२२५२१	संख्या	३	०.२८	१.५०	३	०.२८	१००.००	१.५०		
२.७.१.४६३	जिरी फार्ममा बहुबर्षे तथा डालेघास विस्तार (पशु उत्पादन)	२२५२२	हे.	१	०.११	०.६०	१	०.११	१००.००	०.६०		
२.७.१.४६४	खिमिमा फार्ममा बहुबर्षे तथा डालेघास विस्तार (पशु उत्पादन)	२२५२२	हे.	१	०.११	०.६०	१	०.११	१००.००	०.६०		
२.७.१.४६५	हे उत्पादन (जिरी) (अन्य)	२२५२२	मे.टन	२००	०.८८	४.७५	२००	०.८८	१००.००	४.७५		
२.७.१.४६६	हे उत्पादन (खिमि) (अन्य)	२२५२२	मे.टन	३०	०.१९	१.००	३०	०.१९	१००.००	१.००		
२.७.१.४६७	साइलेज वनाउने(जिरीमा)	२२५२२	मे.टन	२५०	०.५६	३.००	२५०	०.५६	१००.००	३.००		
२.७.१.४६८	खिमिमा साइलेज वनाउने(अन्य)	२२५२२	मे.टन	७५	०.२३	१.२५	७५	०.२३	१००.००	१.२५		
२.७.३.२८५	हरियो घाँस उत्पादन (जै/भेच ५ हेक्टर जै/भेच ५ हेक्टर जिरी)(अन्य)	२२५२१	हे.	५	०.५६	३.००	५	०.५६	१००.००	३.००		
२.७.३.२८६	हरियो घाँस उत्पादन (जै १ भेच १ हे मकै। काउपी १ हेक्टर, खिमिमा सिंचाइ र फेन्सिग सहित) खिमि	२२५२१	पटक	२	०.१९	१.००	२	०.१९	१००.००	०.१०		
२.७.१८.१९४	खिमिमा गाईभैसी प्रजनन केन्द्र (कृ.ग., इन्सीमिनेटर सहित) संचालन	२२५२२	पटक	३	०.५६	३.००	३	०.५६	१००.००	३.००		
२.७.१८.२०९	सुख्खा मौसममा आहारा व्यवस्थापनको लागि हाइड्रोफोनिक्स संचालन (विउ, ज्यामी, केमिकल लगायत अन्य सामग्री खरिद (पशुउत्पादन)	२२५२२	महिना	७	१.९६	१०.५०	७	१.९६	१००.००	१०.५०		
२.७.१८.२१०	राई घासको विउ उत्पादन (पशु उत्पादन)	२२५२२	के.जी.	४०	०.०९	०.५०	३०.५	०.०७	७६.२५	०.५०		
२.७.१८.२११	पास्पलम घासको विउ उत्पादन(पशु उत्पादन)	२२५२२	के.जी.	१५०	०.१८	०.९९	९६.६	०.१२	६४.४०	०.९९		
२.७.१८.८२२	खिमिमा घाँसेवाली वीउ उत्पादनको लागि प्लट विस्तार तथा व्यवस्थापन (फेन्सीग सहित)	२२५२२	हे.	१	०.९३	५.००	१	०.९३	१००.००	४.९७		

LMBIS cod	कार्यक्रम क्रियाकलाप	खर्च शीर्षक	इकाई	वार्षिक			वार्षिक प्रगति			वार्षिक खर्च		कैफियत
				परिमाण	भार	बजेट	प्रगती	भारतीय प्रगति	भा.प्र. प्रतिशत	खर्च रकम रु	वित्तिय प्रगति	
२.७.१.८.८२३	जिरीमा घाँसेवाली वीउ उत्पादनको लागि प्लट विस्तार तथा व्यवस्थापन (फेन्सींग सहित)	२२५२२	हे.	१	०.९३	५.००	१	०.९३	१००.००	४.९५		
७.२.९.२४	ड्रेन्चिङ्ग, भ्याक्सिनेशन र औषधि उपचार सेवा(पशु उत्पादन)	२२५२२	पटक	३	०.५६	३.००	३	०.५६	१००.००	०.३०		
२	बंगुरको न्युकलीयस हर्डस व्यवस्थापन तथा प्रवर्द्धन कार्यक्रम											
२.७.१.२२७	बंगुरको न्युकलीयस हर्ड/माउ पालन (दाना, ज्यामी, अन्य उत्पादन सामग्री सहित)	२२५२१	संख्या	२०	२.७९	१५.००	२०	२.७९	१००.००	१५.००		
२.७.१.२२८	रिप्लेसमेन्ट बंगुर पालन (दाना, ज्यामी, अन्य उत्पादन सामग्री सहित)	२२५२२	संख्या	८	०.६३	३.४०	८	०.६३	१००.००	३.४०		
२.७.२.२५३	पाठापाठी उत्पादन (दाना, ज्यामी, अन्य उत्पादन सामग्री सहित)	२२५२२	संख्या	२३०	१.८४	९.९०	१९१	१.५३	८३.०४	९.९०		
२.७.३.२८७	रिप्लेसमेन्ट बंगुर खरिद, ढुवानि सहित)	२२५२२	संख्या	८	०.१९	१.००	८	०.१९	१००.००	१.००		
७.२.९.२५	बंगुरहरुको ड्रेन्चिङ्ग, भ्याक्सिनेशन, औषधि उपचार सेवा(पशु उत्पादन)	२२५२२	पटक	३	०.१९	१.००	३	०.१९	१००.००	०.९९		
३	मल्टीप्लायर हर्डस व्यवस्थापन तथा प्रवर्द्धन कार्यक्रम											
	बाह्य स्रोत केन्द्र विकास तथा व्यवस्थापन											
२.६.४.२३८	गाईपालन व्यवस्थापन तालिम(३ दिने)(उच्चमशीलता ,रोजगारी मुलक / सशक्तिकरण / सीप विकास तथा क्षमता अभिवृद्धितालिम)	२२५१२	पटक	३	०.५०	२.७०	०	०.००	०.००	०.००		
२.६.४.२३९	बंगुर पालन तालिम (३ दिने)(उच्चमशीलता ,रोजगारी मुलक / सशक्तिकरण / सीप विकास तथा क्षमता अभिवृद्धितालिम)	२२५१२	पटक	१	०.१९	१.००	०	०.००	०.००	०.००		
२.७.५.२७०	बाह्य कार्यक्रम (खावा१ रामधुनी १) को संचालन / फलोअप	२२५२२	पटक	६	०.२२	१.२०	६	०.२२	१००.००	१.२०		
२.७.१.८.४८१	स्थानीय ब्रिडर समुहसंगको समन्वयमा बाह्य कार्यक्रम (खावा१ रामधुनी १) मा रहेका बंगुरहरुको प्राविधिक पारामिटरसंग सम्बन्धित तथ्यांक संकलन विप्लेशन व्यवस्थापन तथा प्रतिवेदन तयारी	२२५२२	संख्या	३	०.१५	०.८१	३	०.१५	१००.००	०.८१		

LMBIS cod	कार्यक्रम क्रियाकलाप	खर्च शीर्षक	इकाई	वार्षिक			वार्षिक प्रगति			वार्षिक खर्च		कैफियत
				परिमाण	भार	बजेट	प्रगती	भारीत प्रगति	भा.प्र. प्रतिशत	खर्च रकम रु	वित्तिय प्रगति	
२.७.१८.८६०	गाईको त्रिडर समूहहरू (५ वटा) संचालन र फलोअप (घांसको बीउ, औषधि, मिल्क क्यान, आदि)	२२५२२	संख्या	१५	०.८४	४.५०	१५	०.८४	१००.००	४.५०		
२.७.१८.८६१	स्वच्छ दुध उत्पादनका लागि गाईका बाह्य कार्यक्रममा रहेका त्रिडर समूहहरूमा स्टीलका बाल्टिन वितरण	२२५२२	संख्या	७५	०.२८	१.५०	१००	०.२८	१००.००	१.५०		
२.७.१८.८६२	स्थानीय त्रिडर समूहसंगको समन्वयमा गाइ कार्यक्रमहरूमा रहेका गाइहरूको प्राविधिक पारामिटरसंग सम्बन्धित तथ्यांक संकलन विषयलेषण व्यवस्थापन तथा प्रतिवेदन तयारी	२२५२२	संख्या	३	०.११	०.६०	३	०.११	१००.००	०.६०		
२.७.१८.८६४	केन्द्र बरिपरीका कृषकहरू समेटेर गाईको त्रिडर समूह गठन तथा परिचालन	२२५२२	संख्या	१	०.१५	०.८०	१	०.१५	१००.००	०.००		
४	प्राविधि प्रसार कार्यक्रम									०.००		
२.७.१८.२६३	फार्म दिवश(पशु उत्पादन)	२२५२२	पटक	१	०.१२	०.६५	१	०.१२	१००.००	०.६५		
२.७.१८.२६७	प्राविधि प्रसार सम्बन्धि डिस्पले बोर्डहरू (फलेक्स प्रिन्ट तथा अन्य प्रसारण सामग्री)	२२५२२	पटक	२	०.१५	०.८०	२	०.१५	१००.००	०.७९		
	ख) चालु खर्च कार्यक्रमको जम्मा:				५५.३१	२९७.०८		५३.३९	९६.५१	२६३.४६	८८.६८	
	कुल जम्मा				१००.०	५३७.१		९८.१	९८.१	४३३.३	८०.६७	

बजेट रु. लाख

खर्च विवरण	भार	बजेट	भारीत प्रगति	भारीत प्रगति प्रतिशत	बजेट खर्च	वित्तिय प्रगति %
पुजीगत खर्चको	४४१७	२४०१०	४४१७	१००।००	१६९।८	७०।८
चालु खर्चको	५५।३१	२९७।१	५३।४	९६।५१	२६३।५	८८।७
कुल जम्मा	१००	५३७।१	९८।१	९८।१	४३३।३	८०।७

The End